



Table Of Contents

TUTORIAL

[Project creation](#)

[Sheet creation](#)

[Printing your diagrams](#)

[Blocks](#)

[Operations on Projects](#)

[Customising your Title Block](#)

[Exporting sheets](#)



The purpose of this Tutorial is to show you what to do to create a project using SEE TECHNICAL.

We will see how to create a new project and manage several pages using symbol insertion, connection, text, drawing....



To create a new project, follow the instructions below:

• Select File / Project... / New



• The following window appears :



• Type in the new project name (Example : TUTORIAL)

• Click on . The "Project Attributes" window is displayed.

• Fill in the project information (Titles and sub-titles)

This information will appear on the title block.

(Example : Title = Project example)



The project title will appear on each page of the project in the title block.

The "Project Attributes" dialog box is shown with the "General" tab selected. The "Directory" field is set to "D:\See_Technical_2002_v4_en\PROJECTS\TUTORIAL\". Below it are two empty text input fields labeled "Title" and "Sub-title". The left sidebar contains three icons: "General" (selected), "Users", and "Company information". At the bottom are three buttons: "OK" (with a green checkmark), "Cancel" (with a red X), and "Help" (with a green question mark).

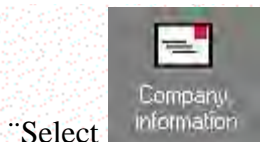


Select **Users** to enter the designer name, drafter name

The following window is displayed:

The "Project Attributes" dialog box is shown with the "Users" tab selected. The left sidebar now has the "Users" icon selected. The main area contains three empty text input fields labeled "Designed by", "Drawn by", and "Verified by". The "OK", "Cancel", and "Help" buttons are visible at the bottom.

Select the  button



Select

Enter all the information you need about your customer (or yourself). Information entered in this window will be displayed in your title blocks.

A screenshot of the 'Project Attributes' dialog box. It has a title bar with 'Project Attributes' and a close button. On the left is a sidebar with three icons: 'General' (a folder), 'Users' (a person), and 'Company information' (a document with a red header). The main area contains several input fields: 'Company' (one line), 'Address' (two lines), 'Postal/Zip Code' and 'Town' (two separate one-line fields), and 'Phone' and 'Fax' (two separate one-line fields). At the bottom are three buttons: 'OK' (with a green checkmark), 'Cancel' (with a red X), and 'Help' (with a question mark).

Select

In the Project Attributes window select 

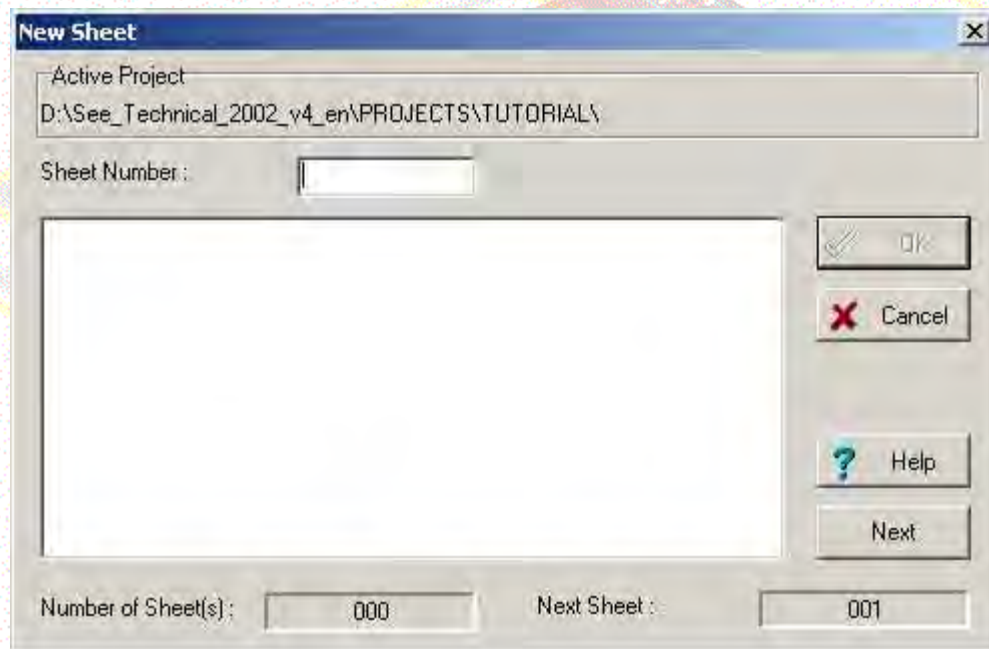
The project is now created.

Comment

Project information may be modified by selecting the options **File / Project / Informations**

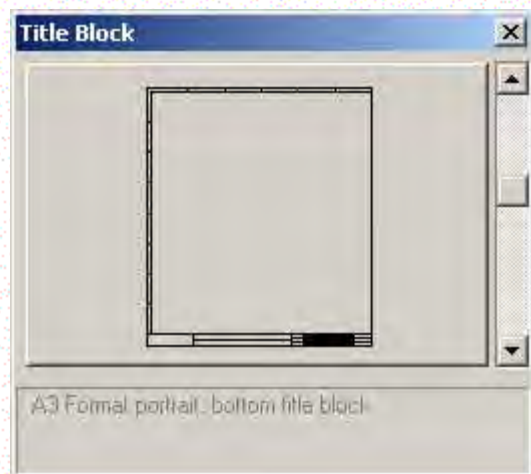


After the creation of your project, the following window is displayed:

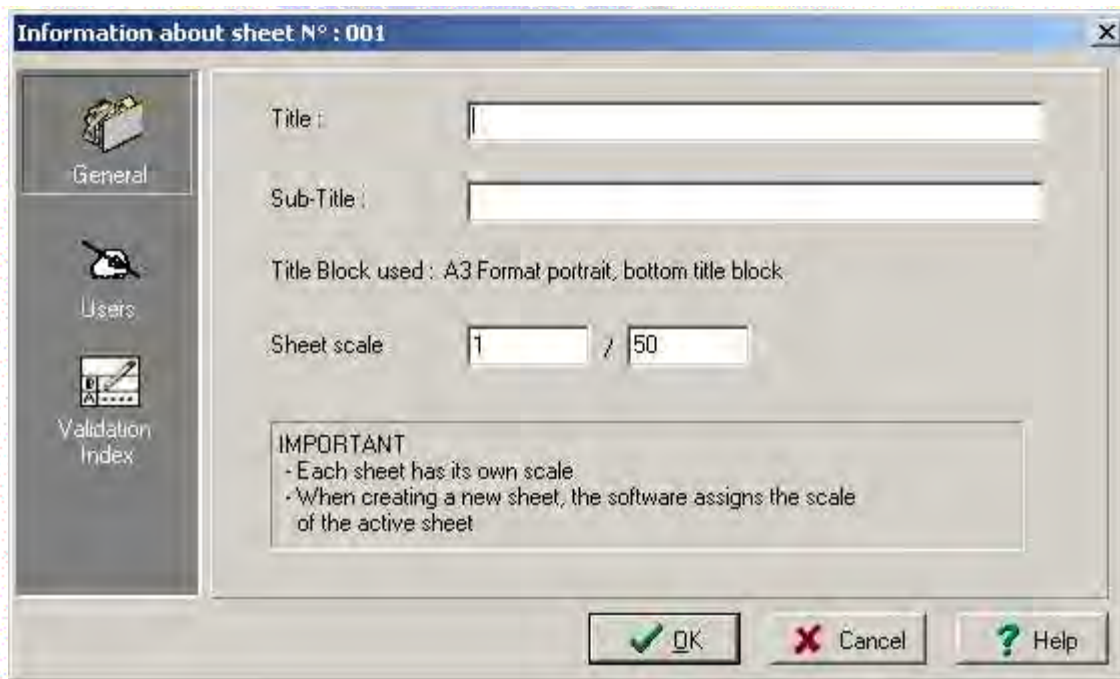


Click on  or enter the sheet number.

Select your title block by clicking on the icon representing the title block (see image below). You can select a different title block by using the vertical scroll bar.



Enter the information of the first sheet (Title, sub-titles).
(Example : Title = POWER, Sub-Title= MOTOR STARTER)

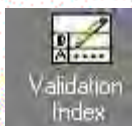


If you wish, you can change the scale of the Title Block (by default 1/50)

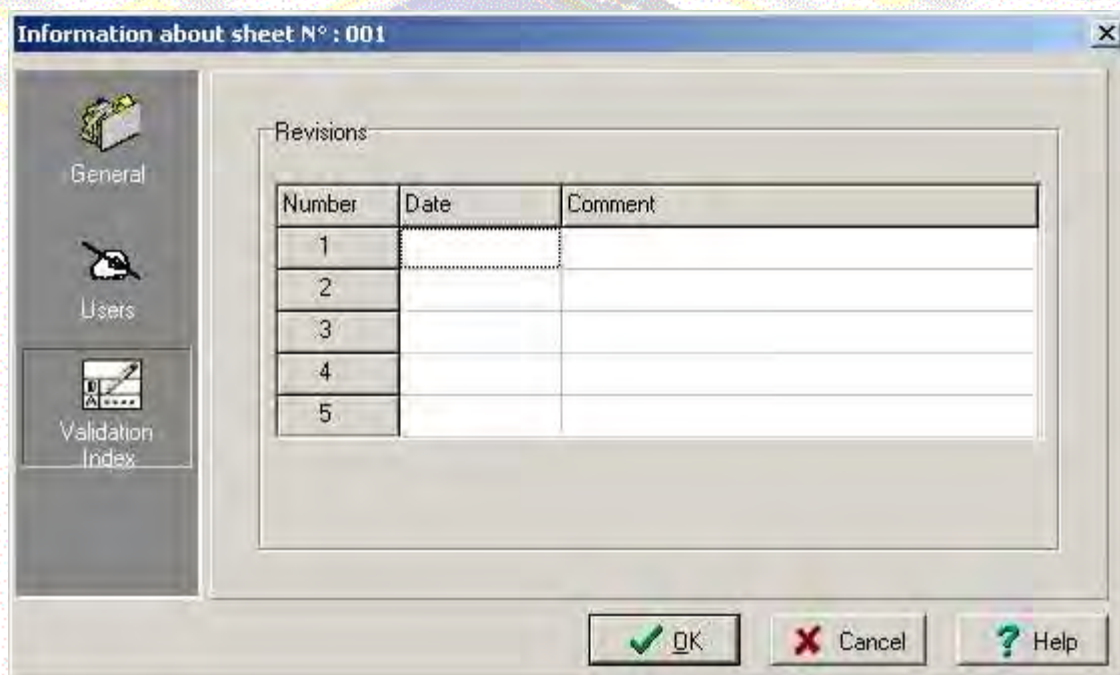


Warning

The sheet title will appear on the page in the title block.

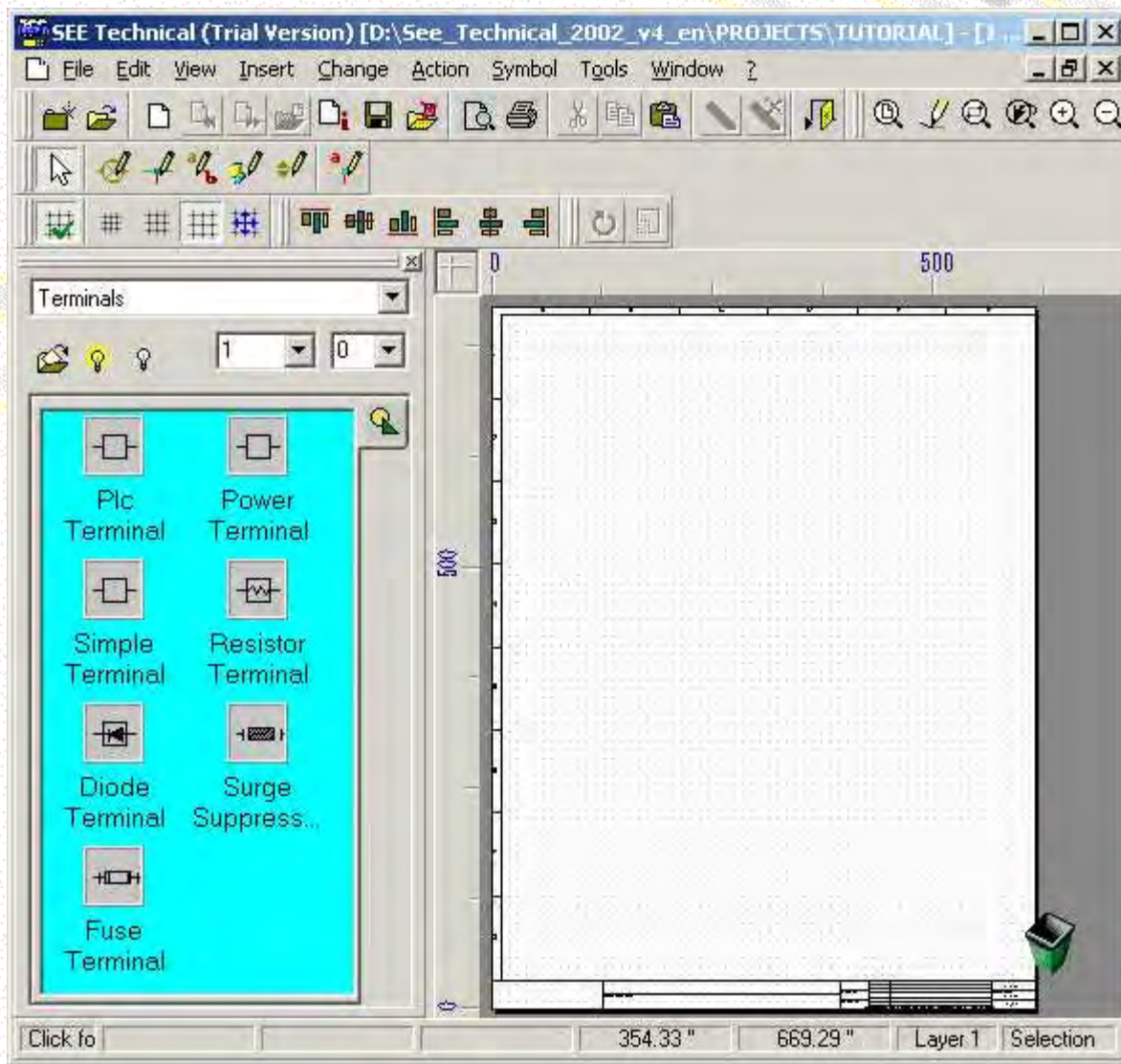


Click on Validation Index to give the first index.



Click on 

The following window is displayed:



Comment

You can modify the information of the sheet at any time by selecting **File / Sheet information**

[Related Topics...](#)

[General Settings](#)

[Creation of an Electrical Schematic](#)



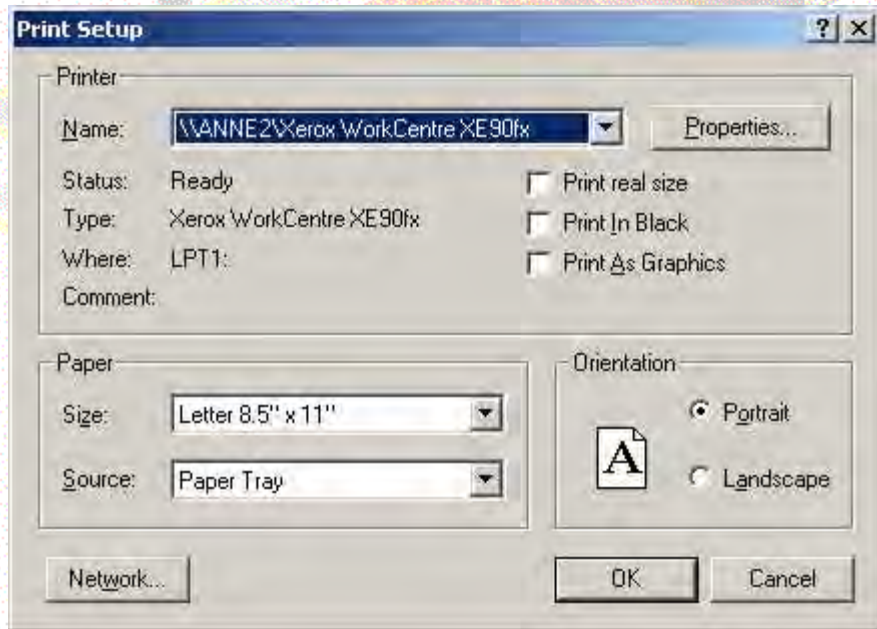


Printing Your Diagrams




Click "File / Print settings"

The following window is displayed:



Select a printer and its settings

Click 

Click "File / Print" or the button 

Comment

It is possible to display a print preview on screen before printing your sheet.

Click "File / Print Preview"



A block is saved information, in a file, of a part of your sheet.

Once saved, a block can be inserted back on as many sheets as you wish.

Example: We will create a block from our motor starter diagram.

Related Topics...

[Creating a block](#)

[Inserting a block](#)

[Copying an entire sheet](#)





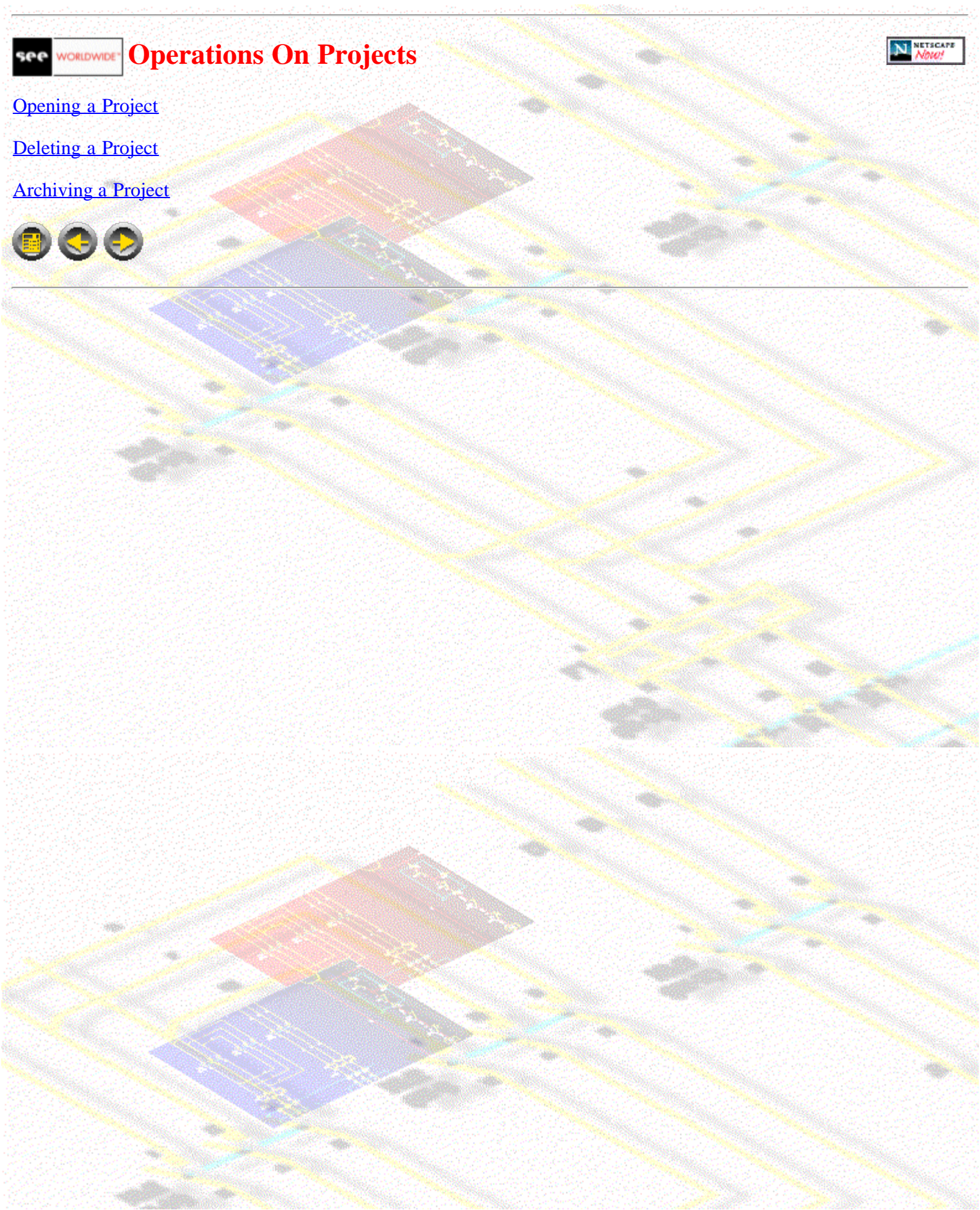
Operations On Projects



[Opening a Project](#)

[Deleting a Project](#)

[Archiving a Project](#)



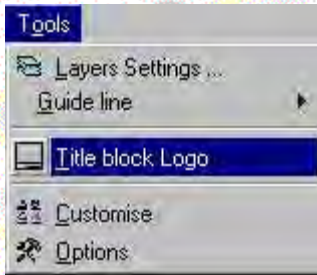


Customising Your Title Block

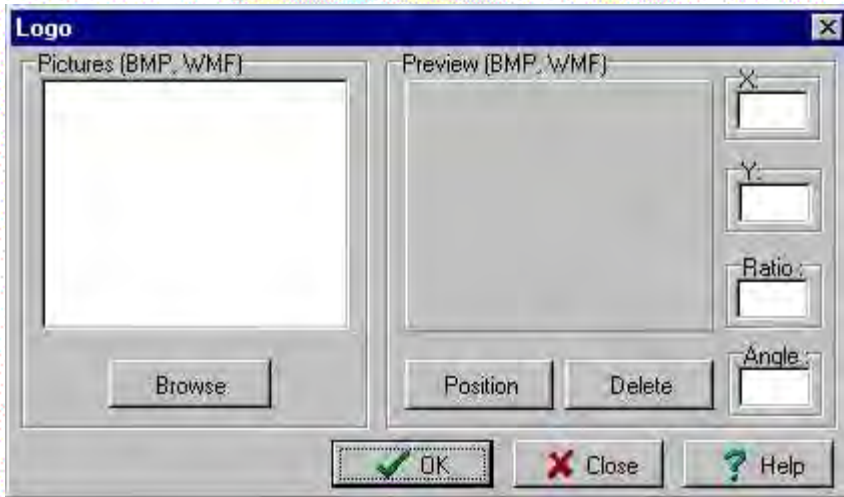



It is possible to add a Logo to title blocks.

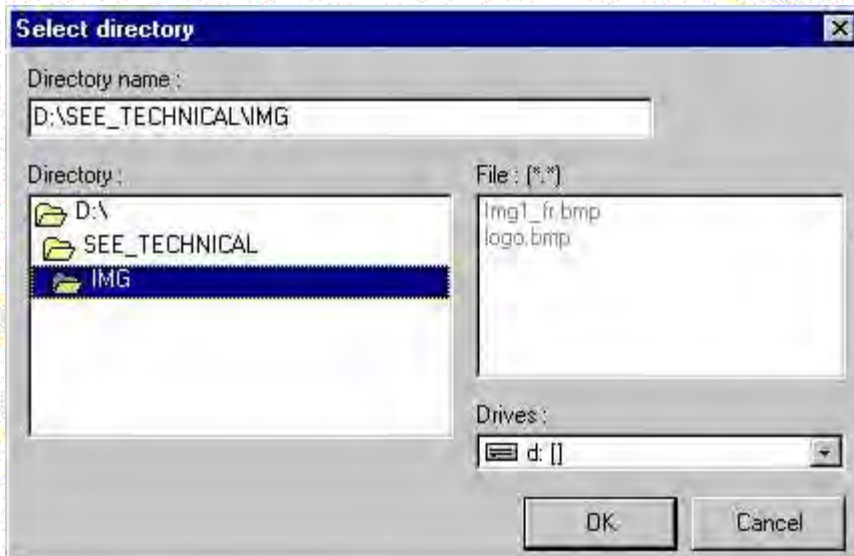
Click "Tools / Title block Logo"



The following window is displayed:

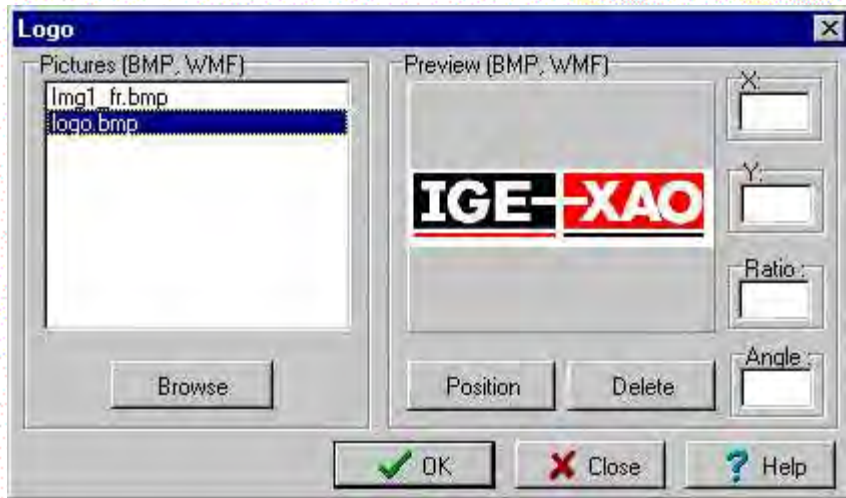


Click  to select the directory where your logo is stored.



Click .

“You get:



“Click on 

“Click the insertion point (corresponding to the bottom left corner of your logo) or type in the coordinates.

“Click 

“You get:





Exporting Sheets

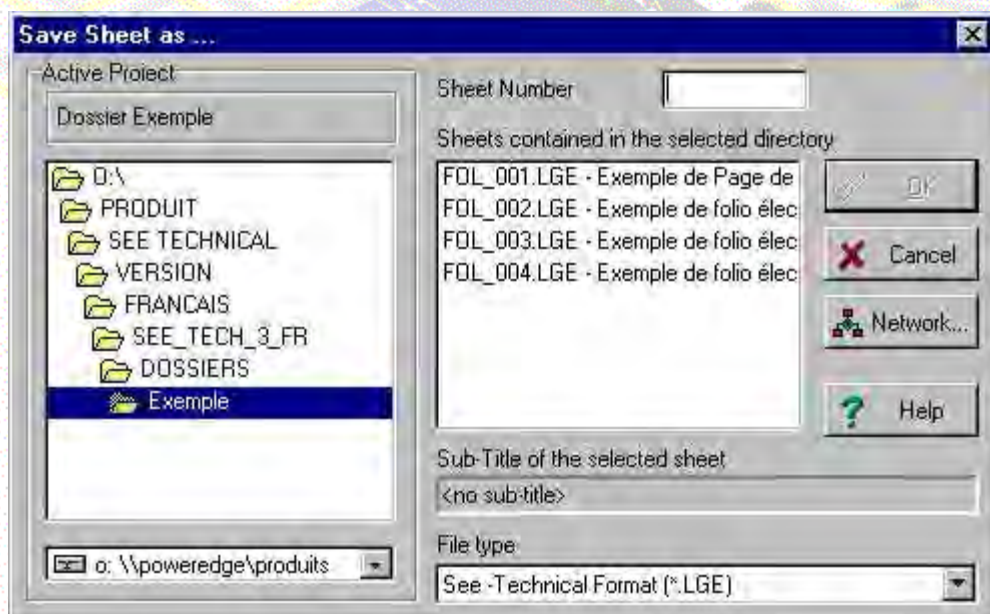


It is possible to save sheets in a different file format such as Bmp, Emf, Jpg, Gif or Dxf.

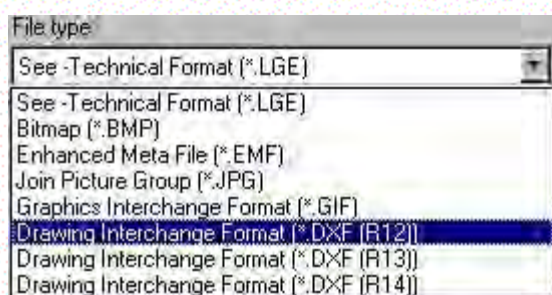
••Open a sheet.

••Click File / Save as

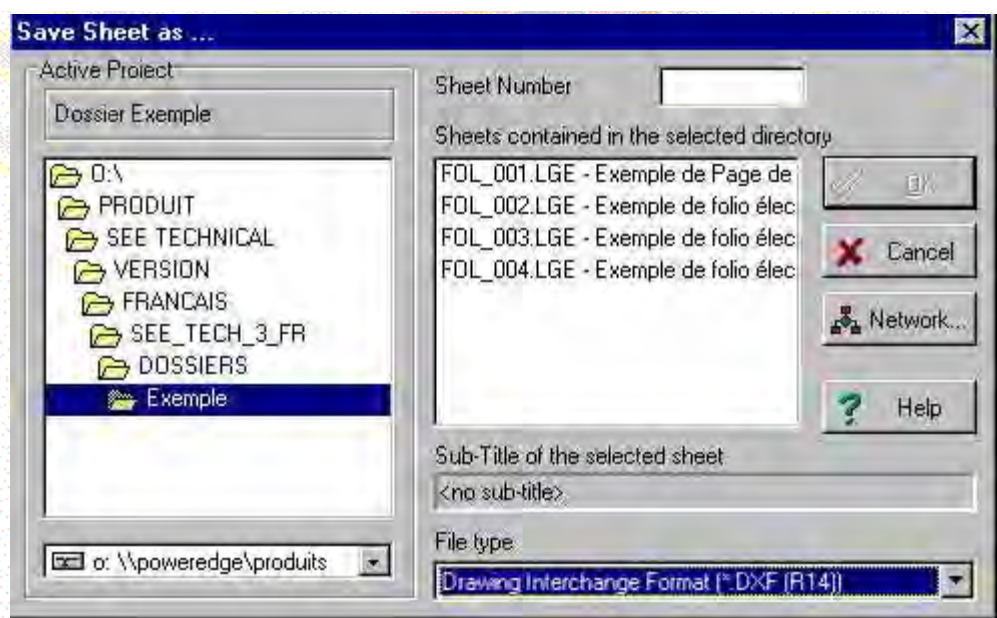
••The following window is displayed:



••Select a file format (Exemple: Dxf).



••We get:



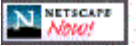
Click 

The sheet is saved within the Project directory.





Table Of Contents



TUTORIAL

[Project creation](#)

[Sheet creation](#)

[Printing your diagrams](#)

[Blocks](#)

[Operations on Projects](#)

[Customising your Title Block](#)

[Exporting sheets](#)



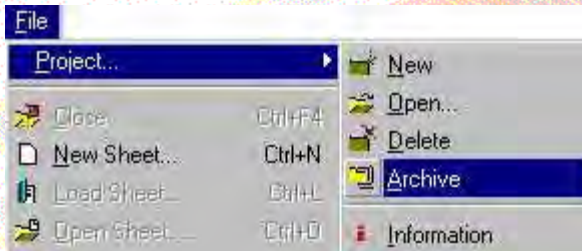
The purpose of this Tutorial is to show you what to do to create a project using SEE TECHNICAL.

We will see how to create a new project and manage several pages using symbol insertion, connection, text, drawing....

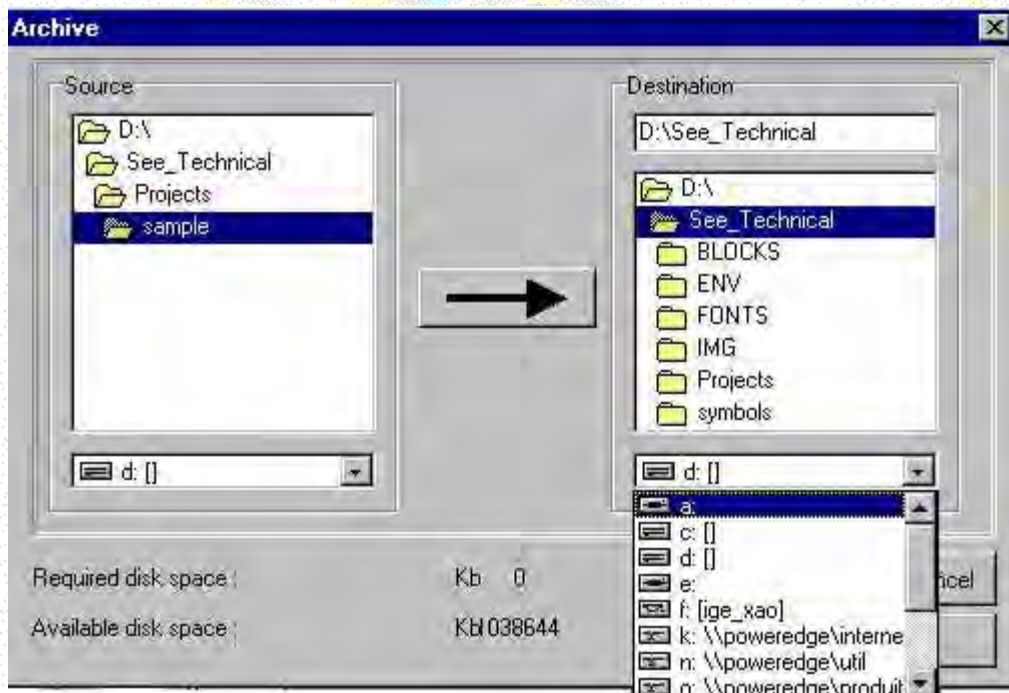


This function allows you to archive (backup) a Project on diskettes or any other storing device.

“Click "File / Project / Archive"



“The following window is displayed:



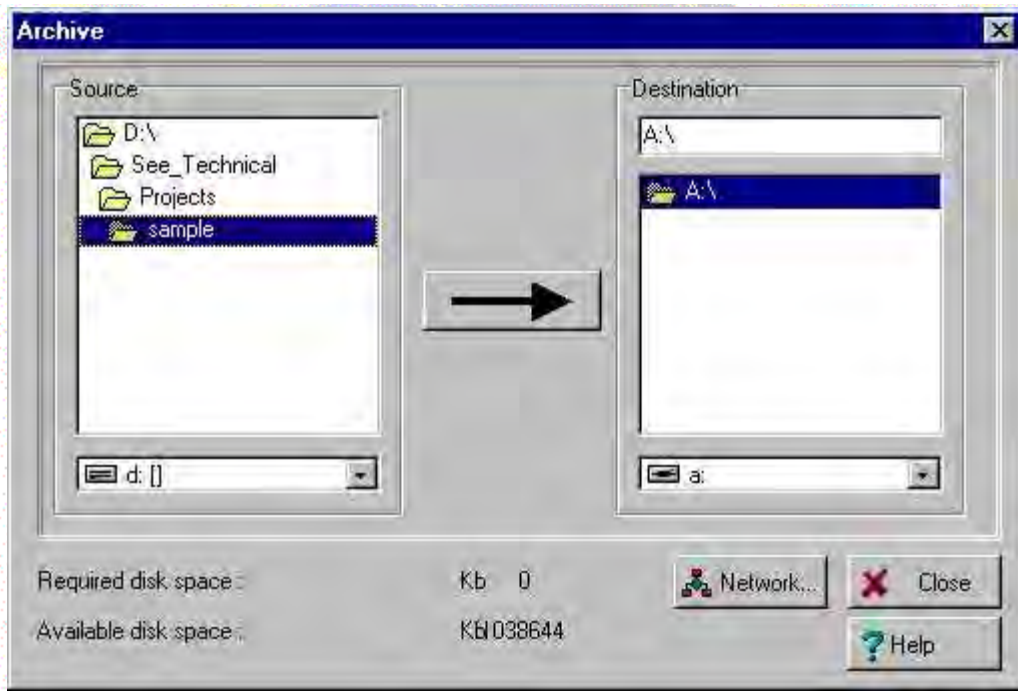
“Select the Project to archive from the left part of the window.

(Example: The SAMPLE Project)

“Select the disk drive where you wish to archive the Project on the right part of the window.

(Example: On the "A" drive)

“Select the directory where you wish to archive the Project on the right part of the window. (Example: Sample)



Your Project is archived.





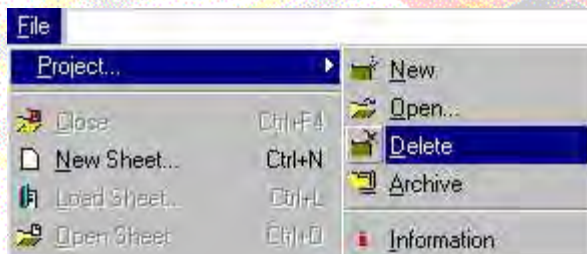
Deleting A Project



Comment

It is impossible to delete the active Project.

Click File / Project / Delete

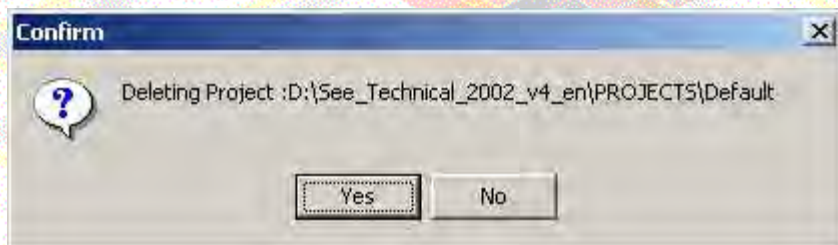


Select the Project you wish to delete in the following window:



Click 

A Confirm window will be displayed:



Click 

Comment

It is impossible to delete the active Project.

The following window will be displayed:





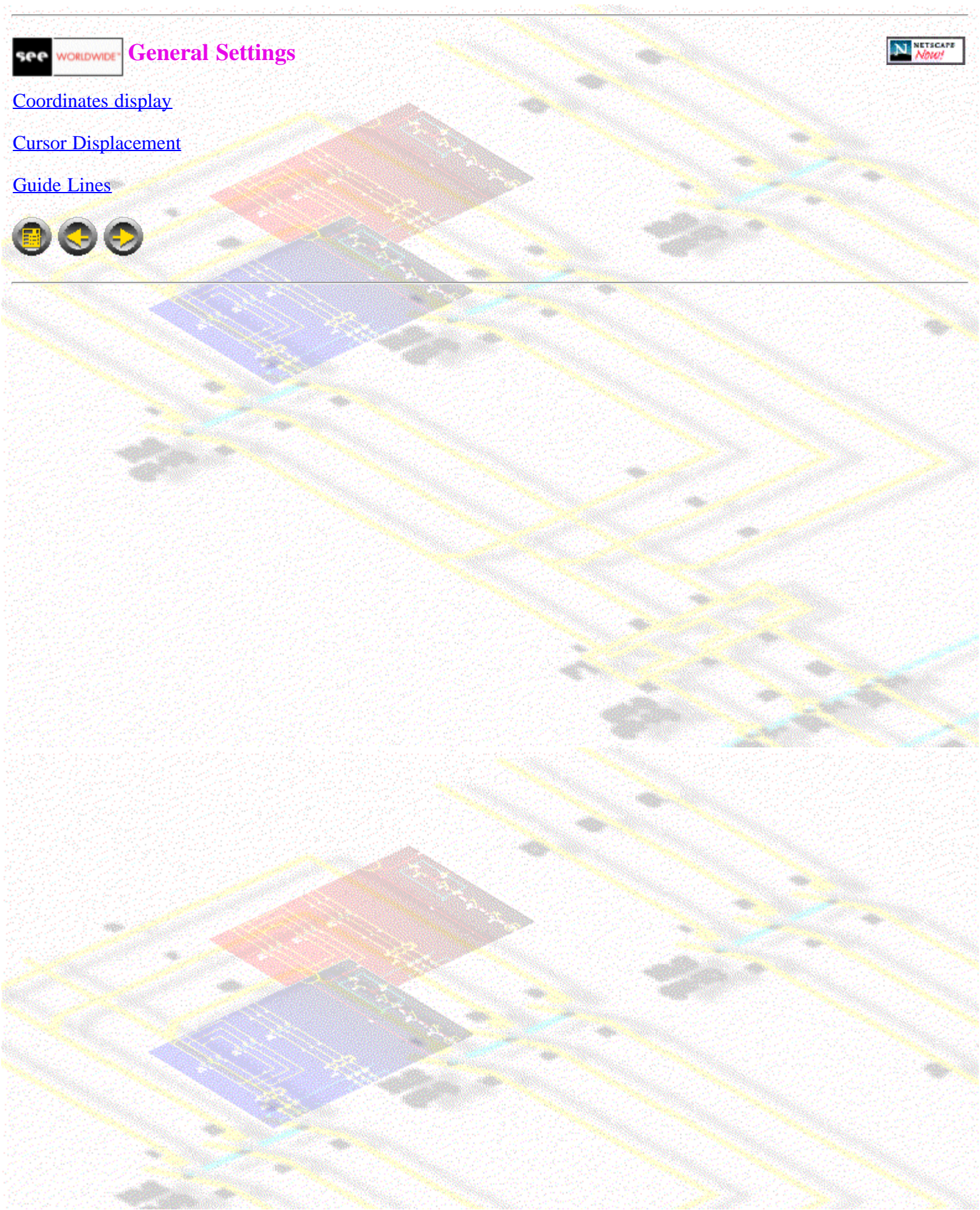
General Settings



[Coordinates display](#)

[Cursor Displacement](#)

[Guide Lines](#)





Creation Of An Electrical Schematic



We will now create the Power section of an electrical Diagram.

Related Topics...

[Insert Connection](#)

[Symbol Insertion](#)

[Inserting Text](#)

[Inserting drawings](#)

[Inserting a Connection Text](#)

[Creating a building diagram](#)

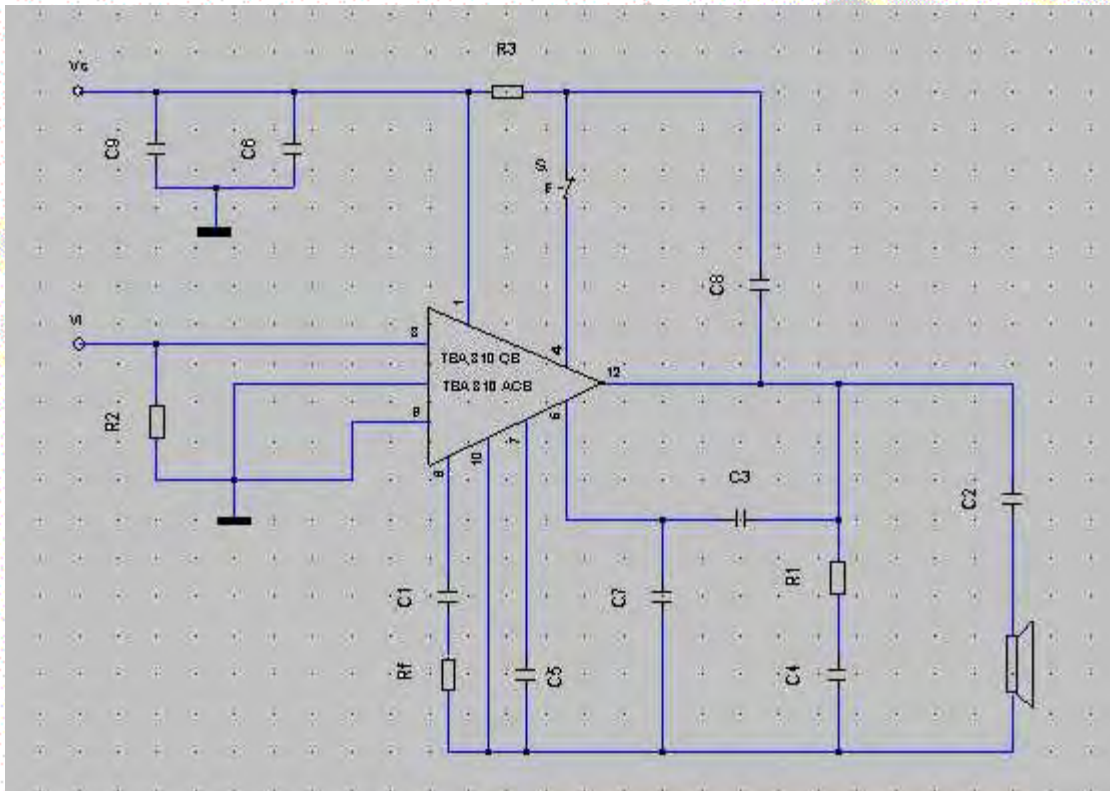
[Setting the scale](#)

[Inserting Walls](#)

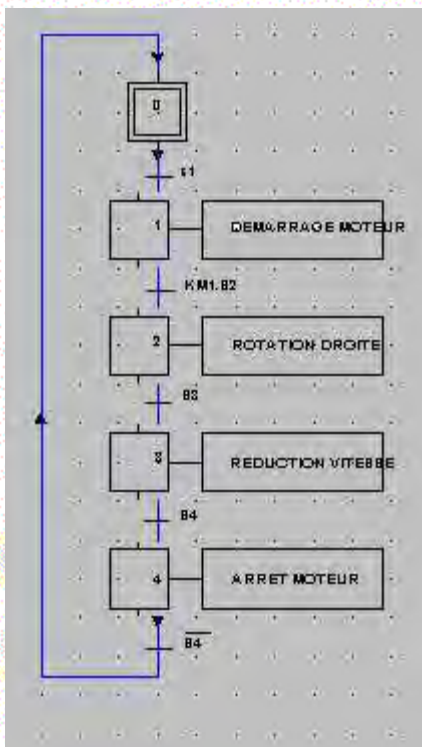
[Inserting dimensions](#)

[Example of schematic](#)





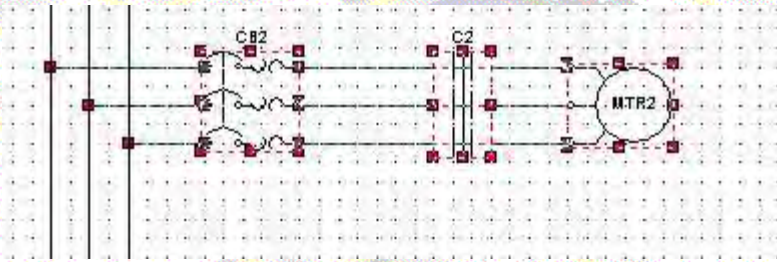
Audio filter



Open the power sheet (previously created in this tutorial)

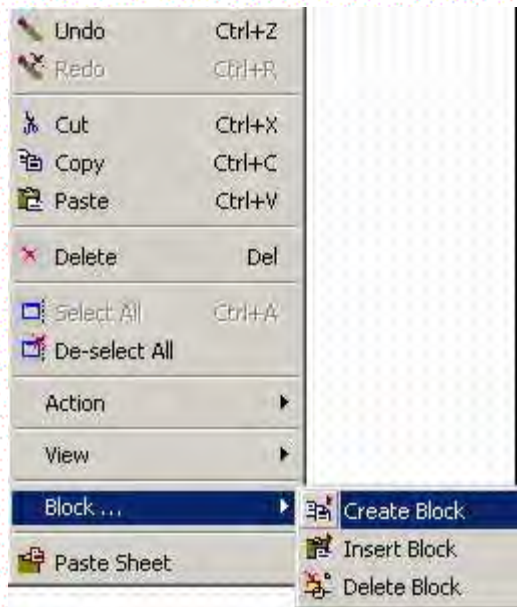
Click

Click and drag to draw a box around the area you wish to create as a block.



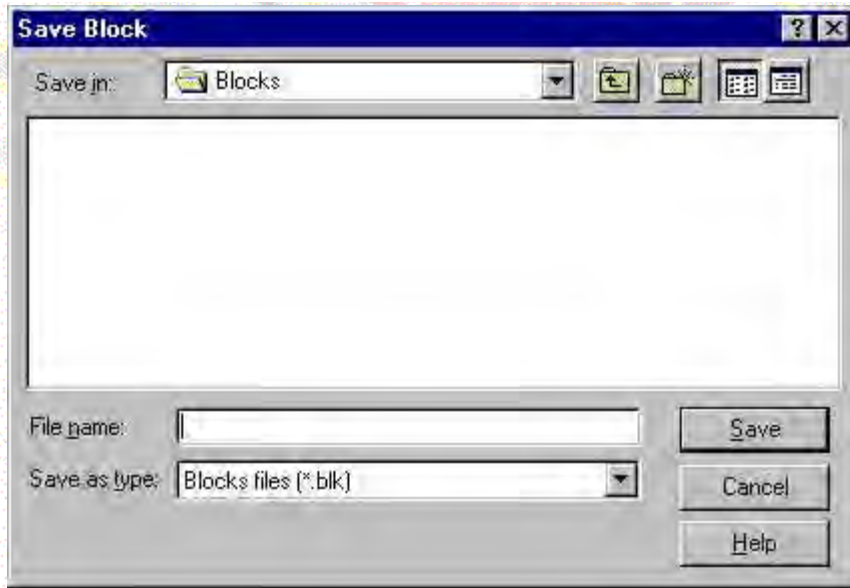
Right click on the area

Click Block / Create block



The following window is displayed:





• Enter a name for your block (Example: Motor starter)

• Click 

• The block is saved on your hard drive.





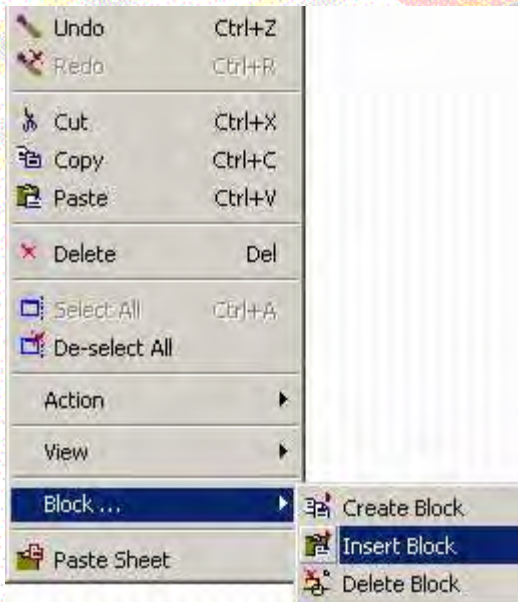
Inserting A Block



Open or create a sheet

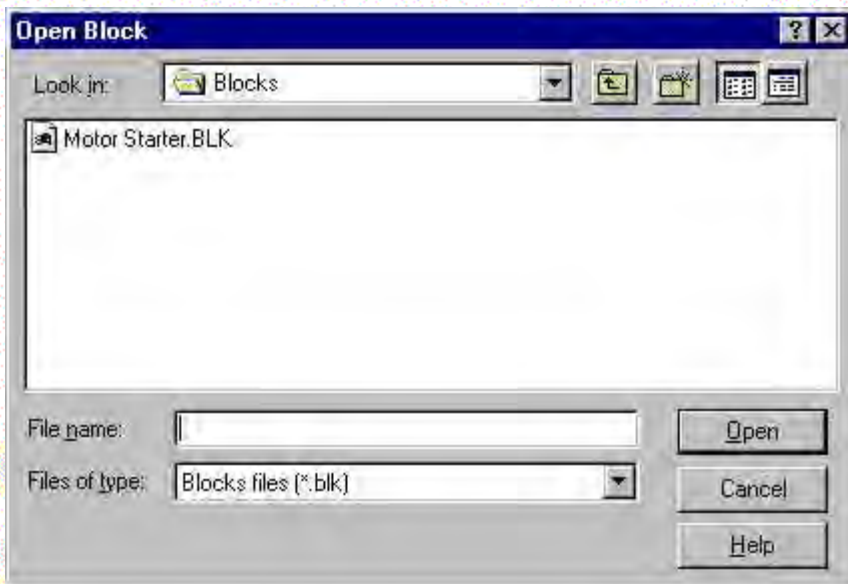
Right click anywhere on the sheet.

The following contextual menu is displayed:



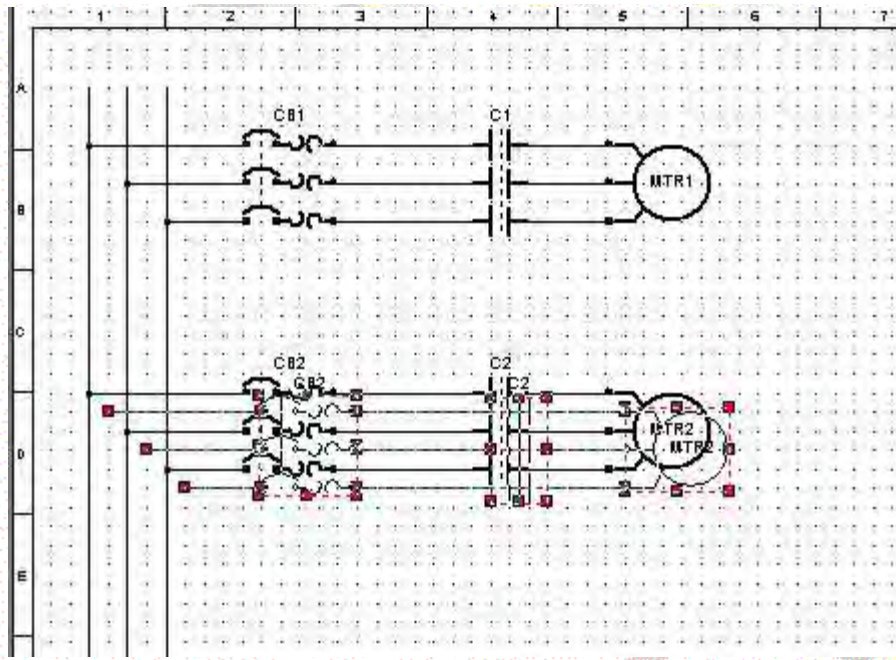
Click "Block / Insert Block"

Select a block to insert from the following window:



Click

You get:



Click and drag the block to its position.





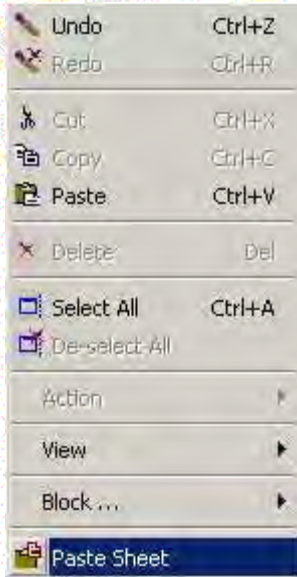
Copying An Entire Sheet



• Create a new sheet

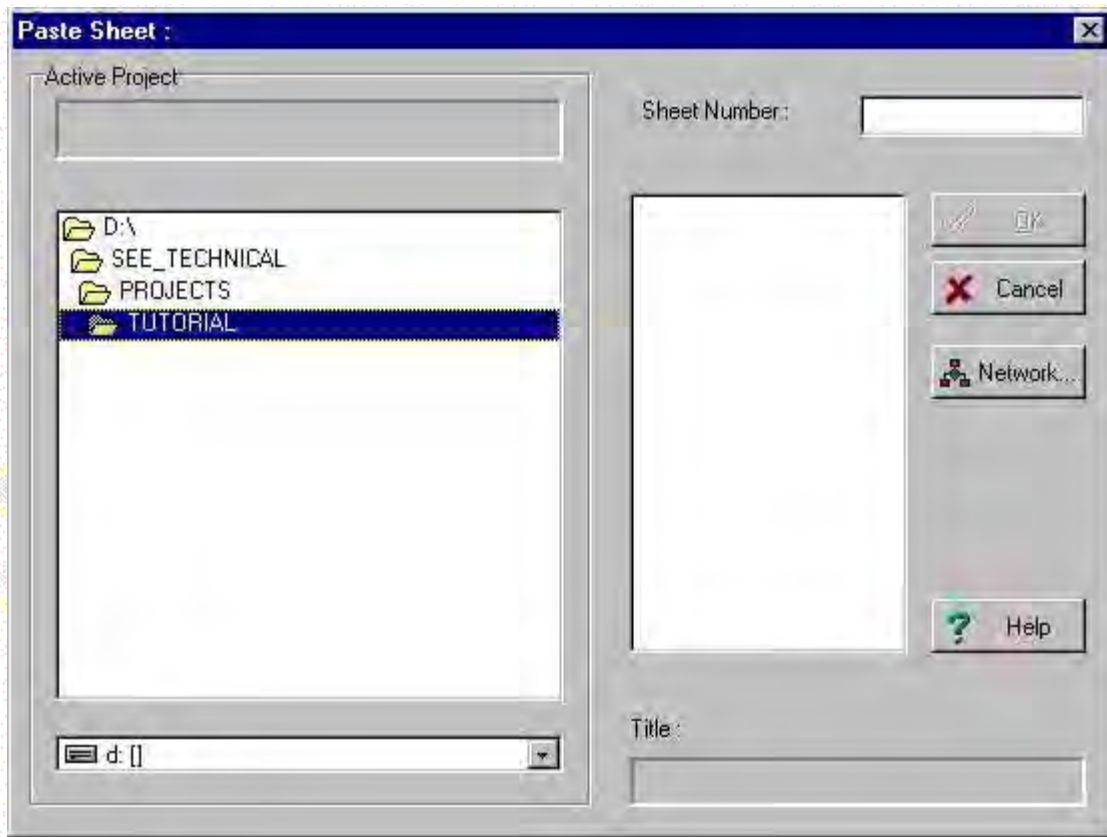
• Right click anywhere on the sheet

• The following contextual menu is displayed:



• Click "Paste Sheet"

• Select the source Project and the sheets to copy from that project.



Click 

Click and drag to set its position.




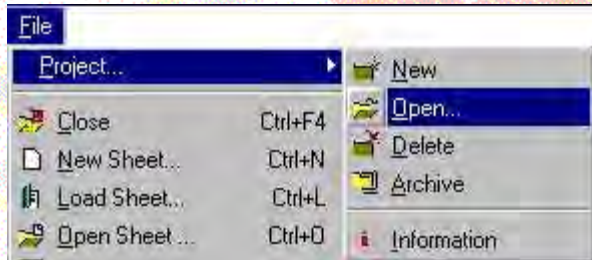


Opening A Project



To open an existing Project:

Click "File / Project / Open" or the button 



Select the Project you wish to open in the following window:



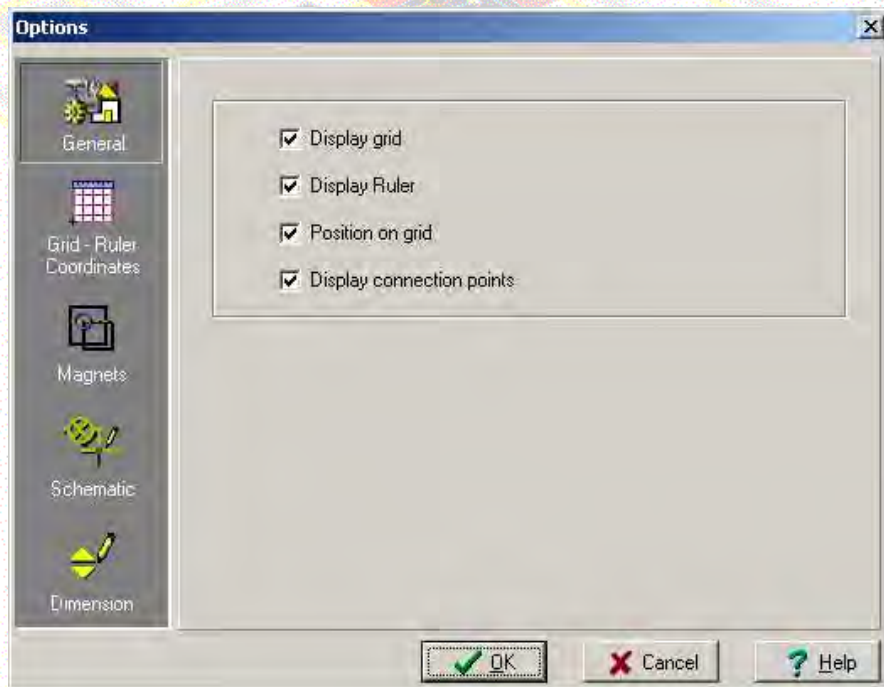
Click 



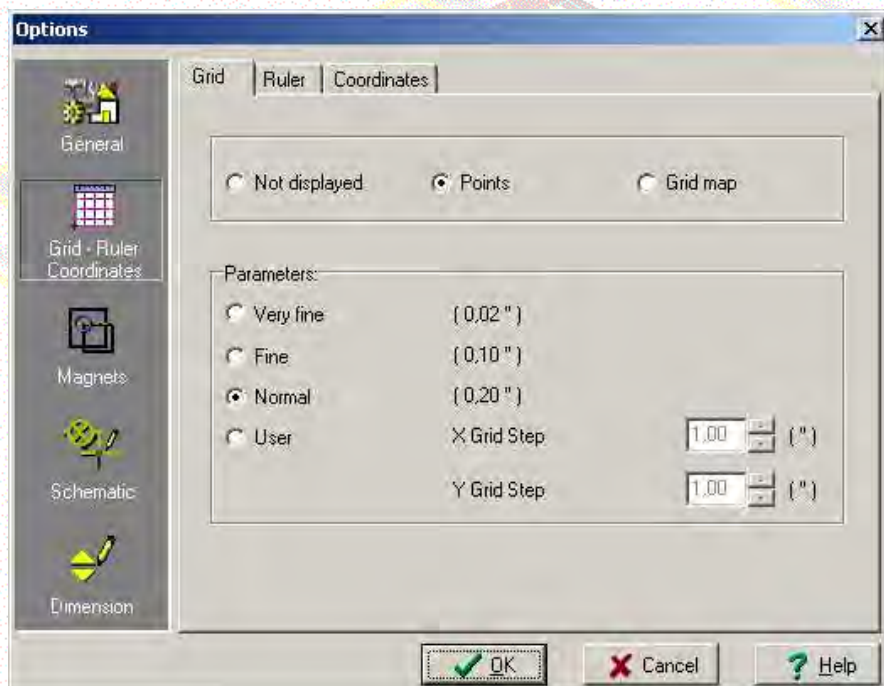
You can choose the units for coordinates display (X,Y).

“Select Tools / Options

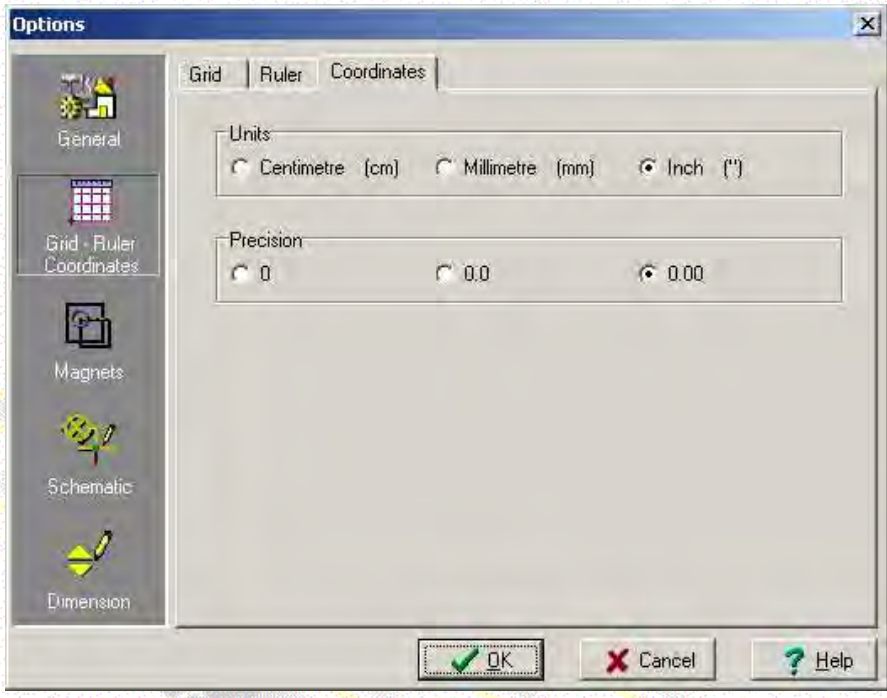
“A window is displayed.



“Click on the **Grid - Ruler Coordinates** tab. The window becomes as so :



“Click on the **Coordinates** tab. The window becomes as so:



Select the unit you want to use:

- Centimetre
- Millimetre
- Inch

Click on 

| | | | | | |
|-----------------------------|--|-------------|------|----------|--------------|
| Project Description | | Designed by | Date | Revisors | Project date |
| PROJECT EXAMPLE TUTO RKL | | AT | | | 3/7/00 |
| Sheet Description | | Drawn by | | | Sheet date |
| POWER MO TO R STARTER | | AT | | | 3/7/00 |
| | | Verified by | | | 1 / 0 |
| | | CB | | | |

Coordinates are displayed at the bottom right of the screen.



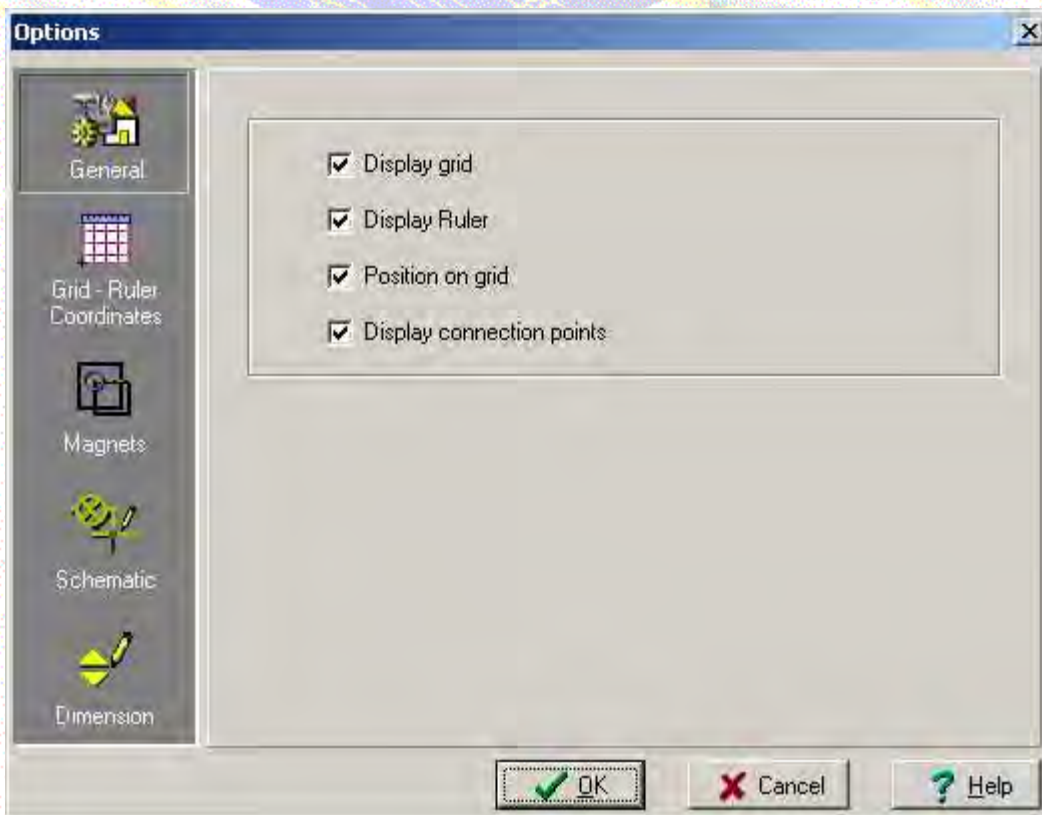
You can select from two methods to move the cursor :

-Free (1/100 of the selected unit)

-Snap on the grid

••Select Tools / Options

••A window is displayed.



••Activate Position on the Grid to snap the cursor on the grid.

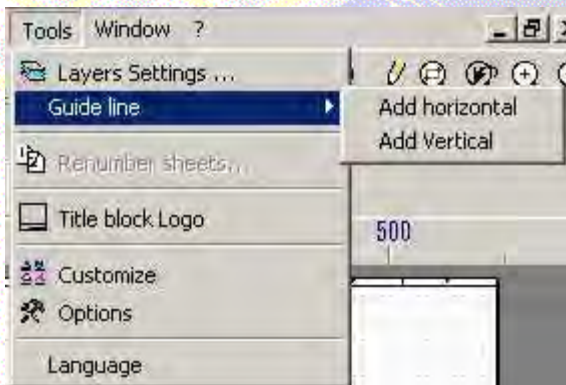


Guide lines are horizontal or vertical lines onto which inserted elements will automatically snap (Texts, Drawings, ..).

Elements will snap to a guide line as long as they are in its area of attraction.

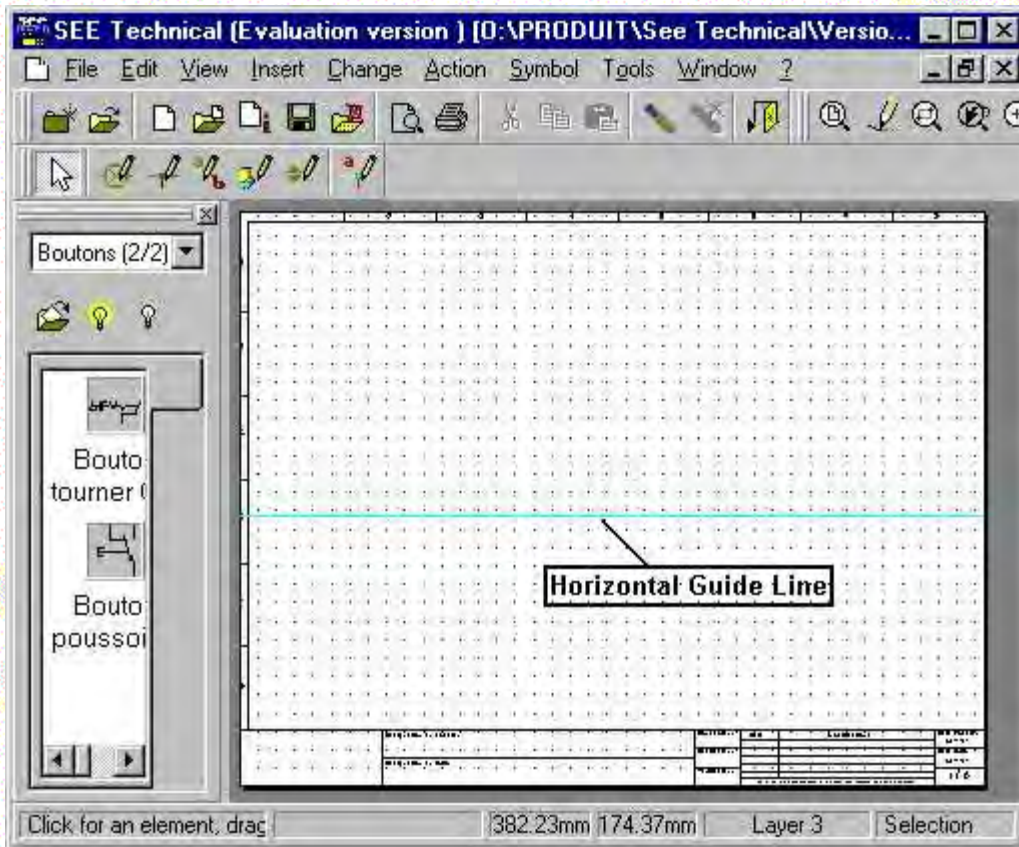
A guide line is defined using a specific line style and colour.

Click Tools / Guide Line / Add Horizontal or Add Vertical.



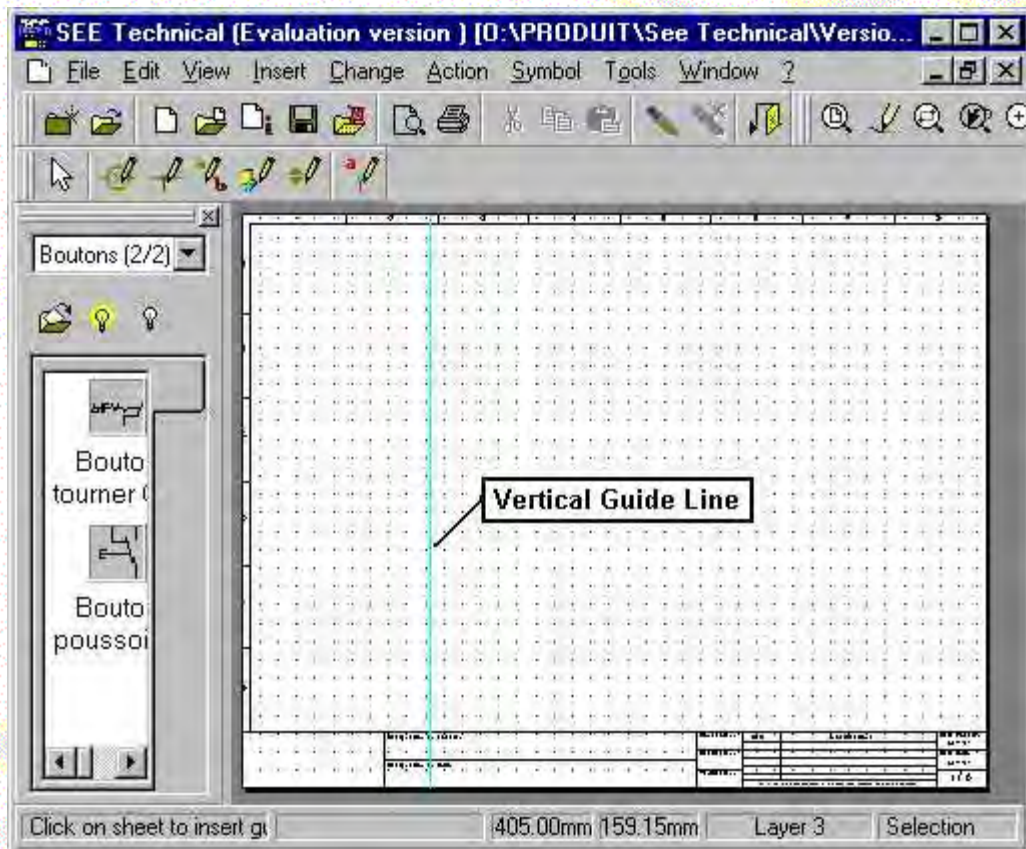
Click to define its position.

Example

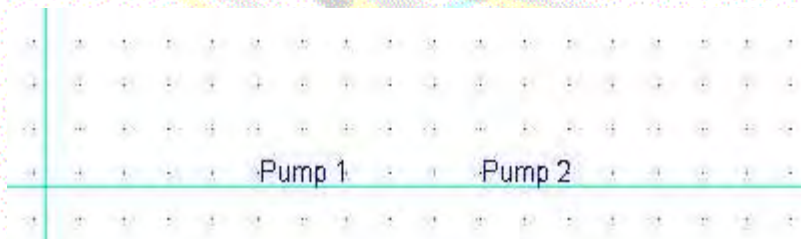


The same method is used for Vertical Guide lines.

Example



All elements (Texts, Drawings,...), you will placed near a guide line will snap to it automatically.

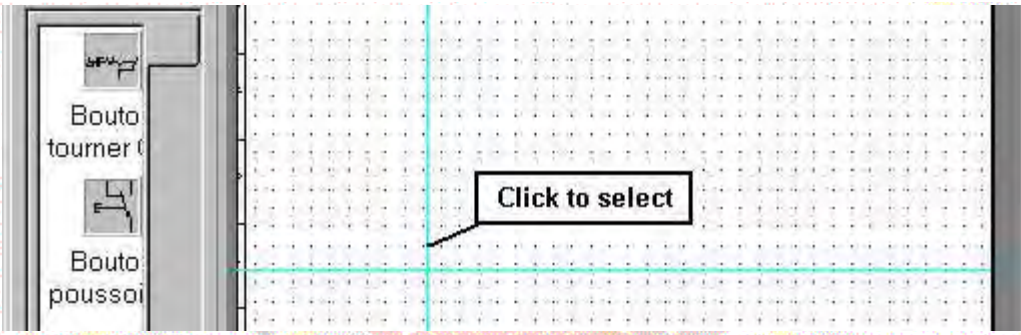


Note

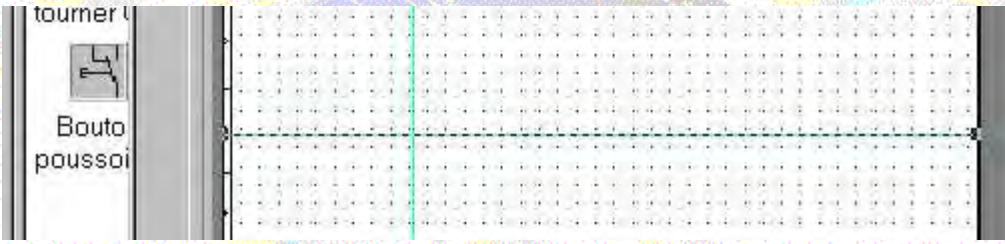
To select a guide line, you must :

Click on 

Click on the guide line you wish to select



The following window displays a selected guide line:



It is then possible to move it, copy it or delete it.

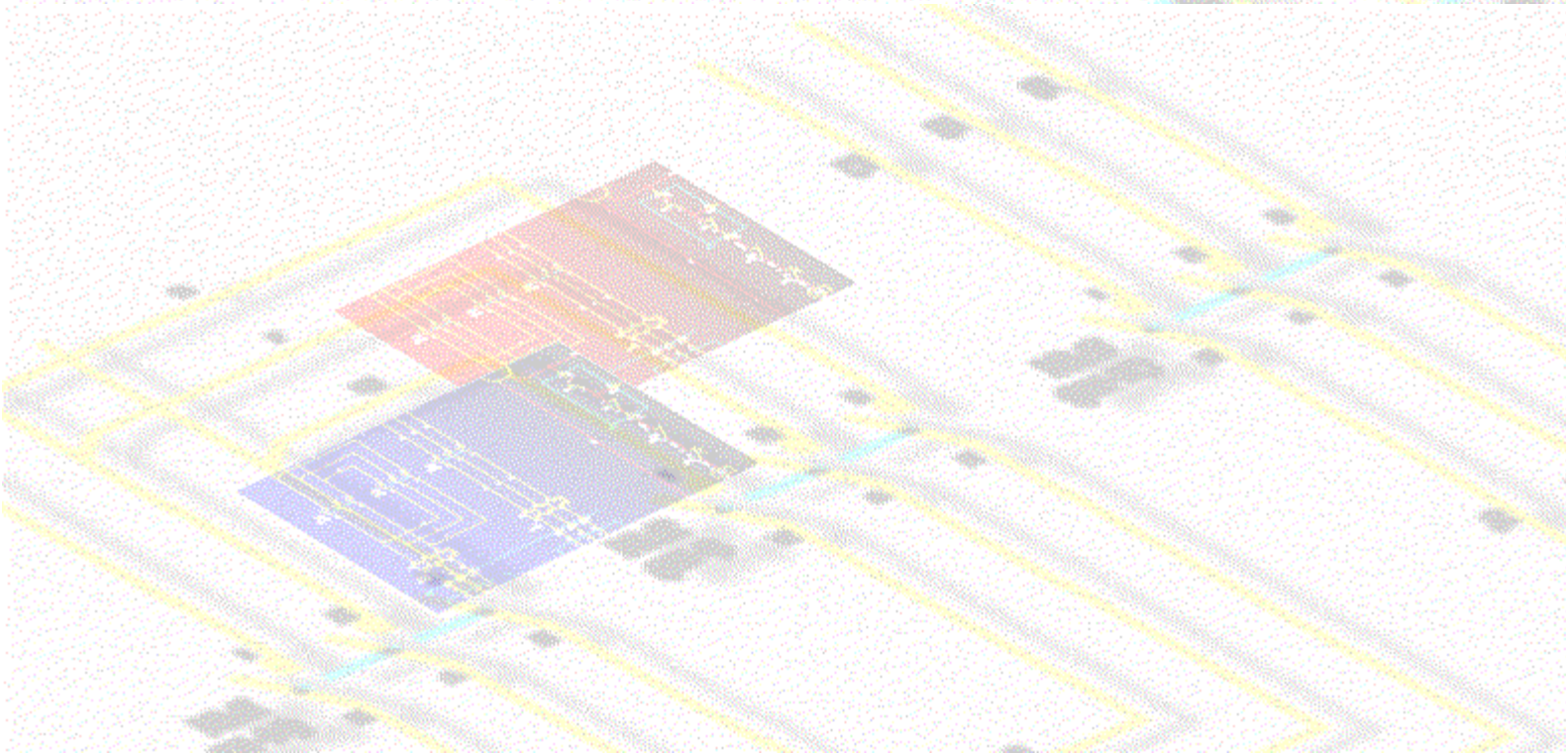
 **Comment**

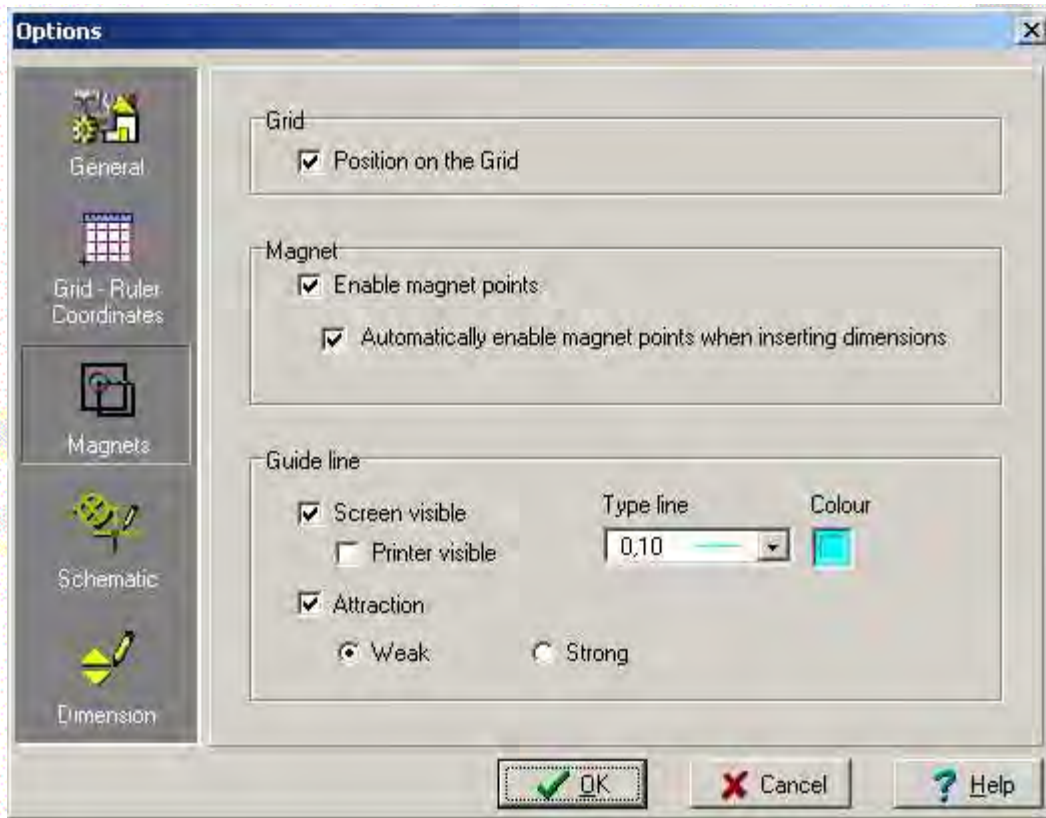
It is possible to modify guide line settings.


Click Tools/Options



Click on the . The window becomes as so





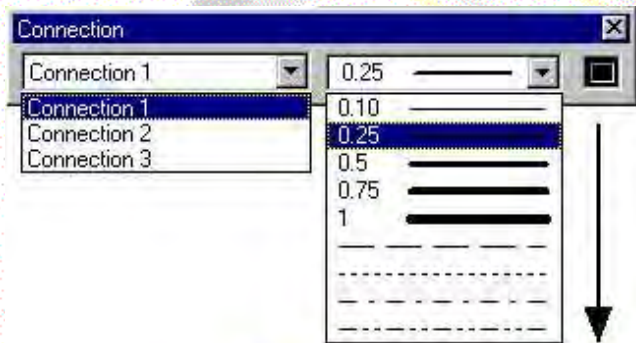
Click on Insert / Connection in the menu or on the Connection button  in the toolbar.

The following menu is displayed :

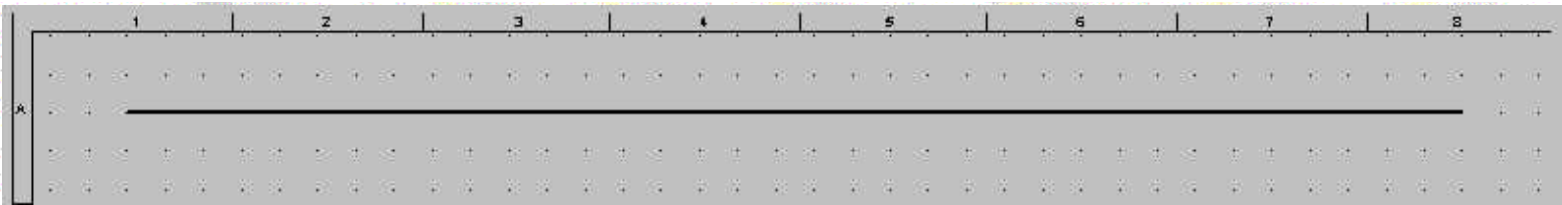


A connection is defined by :

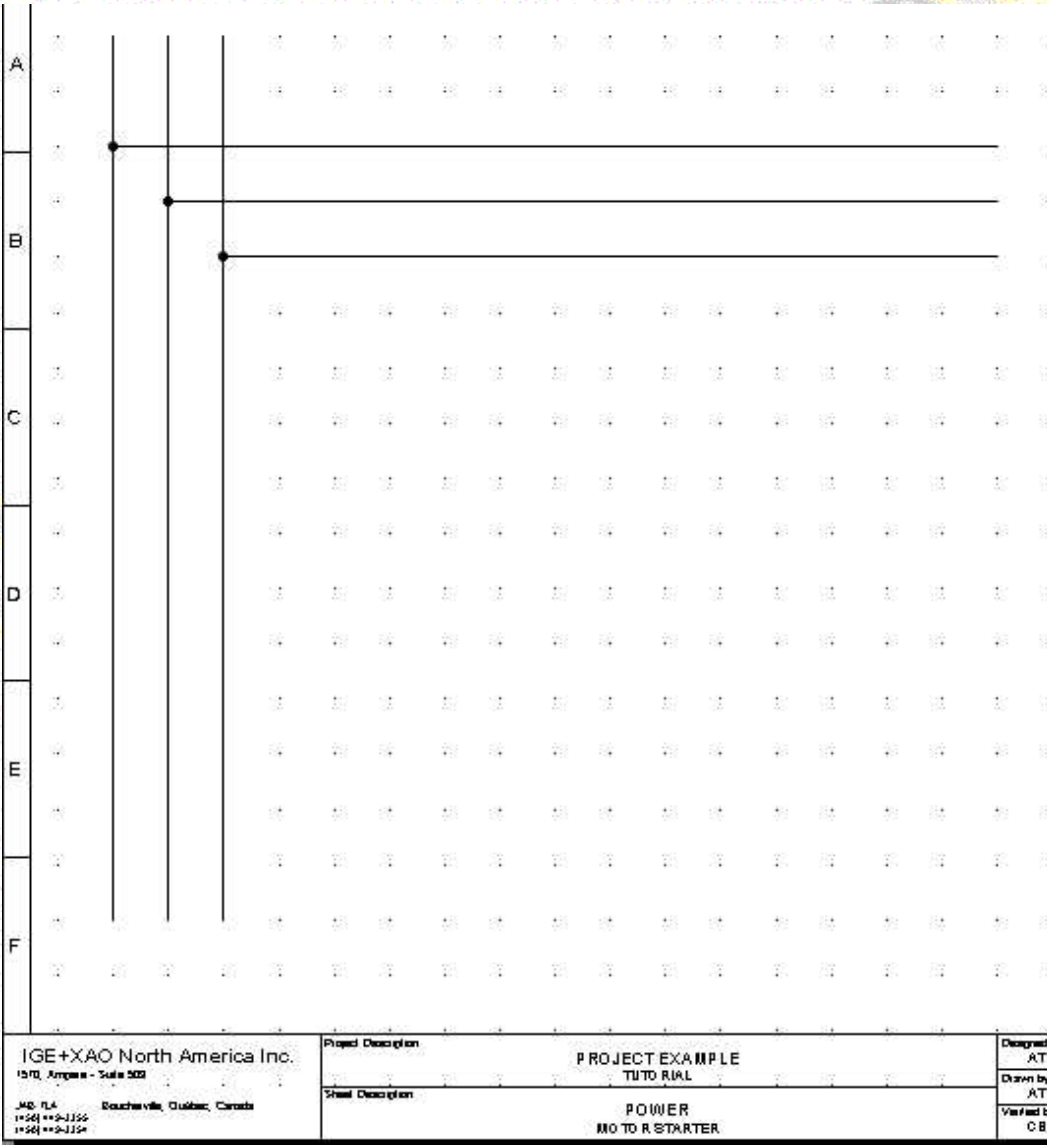
- A connection name
- Line style
- Colour



Click the 1st and the 2nd point to draw a connection



Try to draw these lines:



To copy, delete or move a connection, :

-Click on the Selection button 

-Select a connection and click with the right mouse button

-This menu is displayed :





Comment

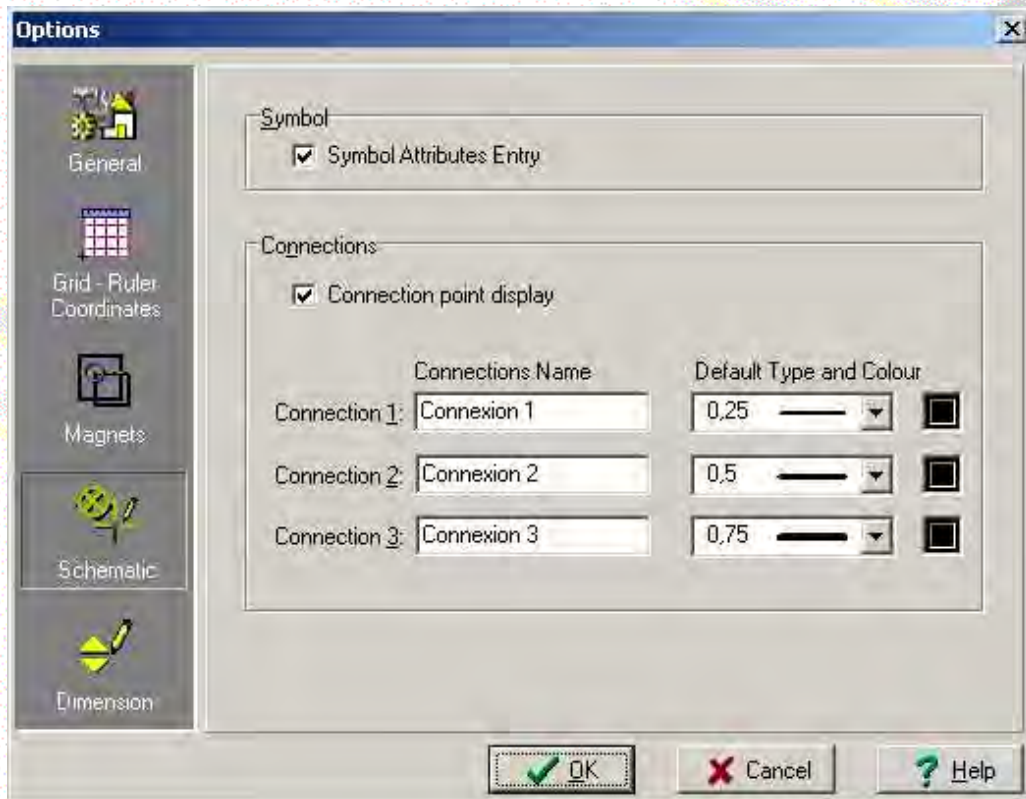
You can have up to three different connections.

You can change the name, line style and colour by selecting the function :

-Tools / Options



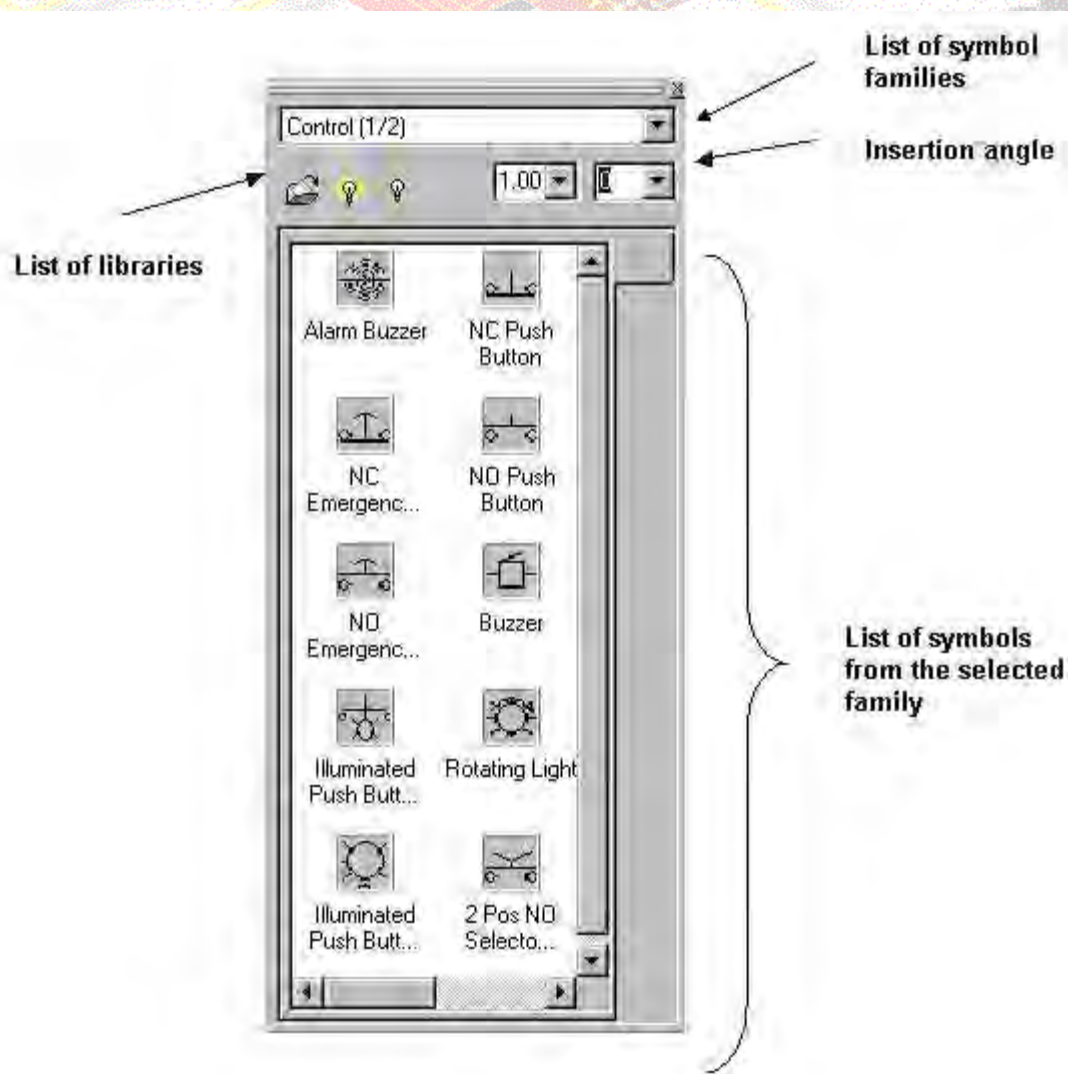
-Click on





Click on Insert / Symbol or the button 

If it is not already displayed, the Pallet explorer appears :



Click on the "Change Palette" button  to change the symbol category. (IEEE, IEC, Building...)

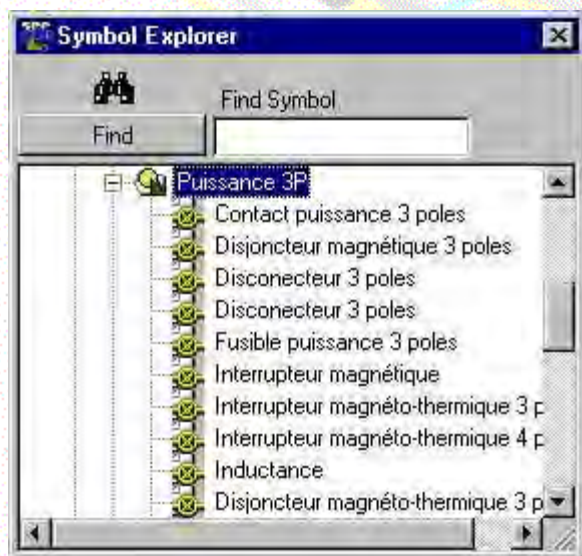
Select the pallet you want to use



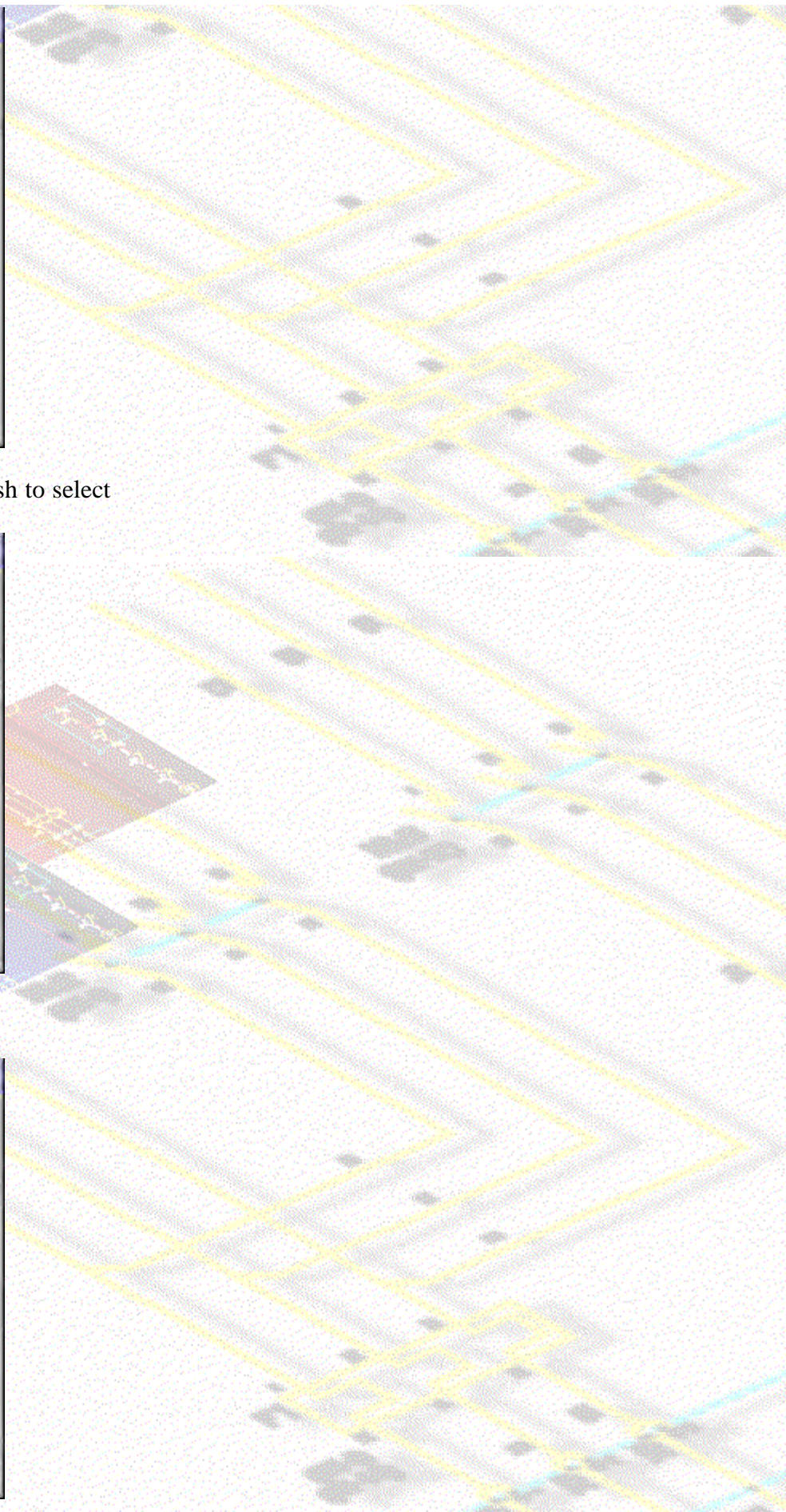
Double-click on the symbol library you wish to select



Double-click on a family you wish to use.



Double-click on the symbol you want to insert



Click on the sheet where you want to insert the symbol.

The following window is displayed :

| Name: | Value: |
|-------|--------|
| TAG | Q |
| INFO | |

Buttons: OK, Cancel

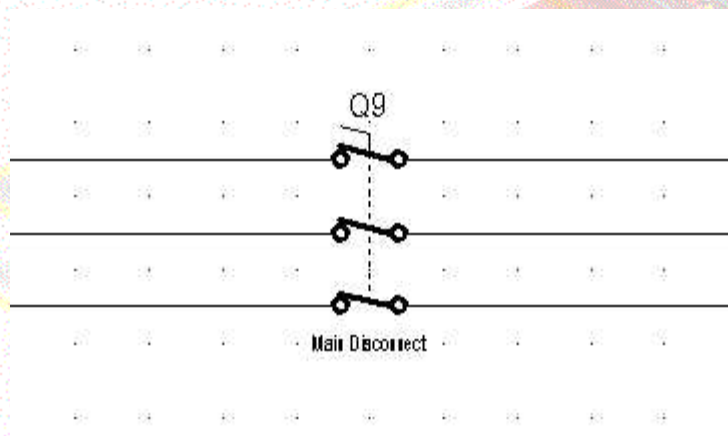
Enter a Tag (component identifier, Example : MTR1, MTR2, etc...)

Enter additional information as required (Voltage,Speed, Power...)
(Example : 0.8HP).

| Name: | Value: |
|-------|-----------------|
| TAG | Q9 |
| INFO | Main Disconnect |

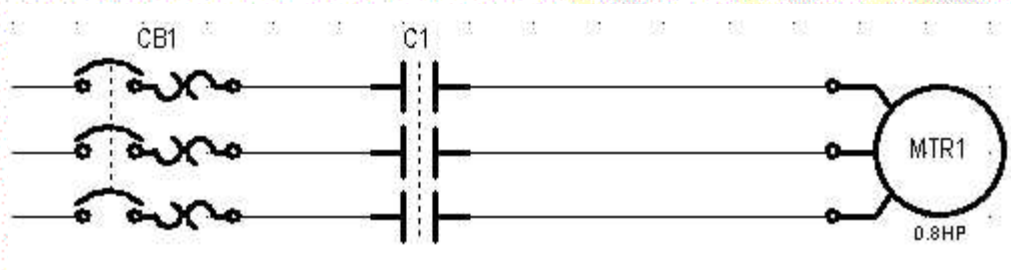
Buttons: OK, Cancel

You get :



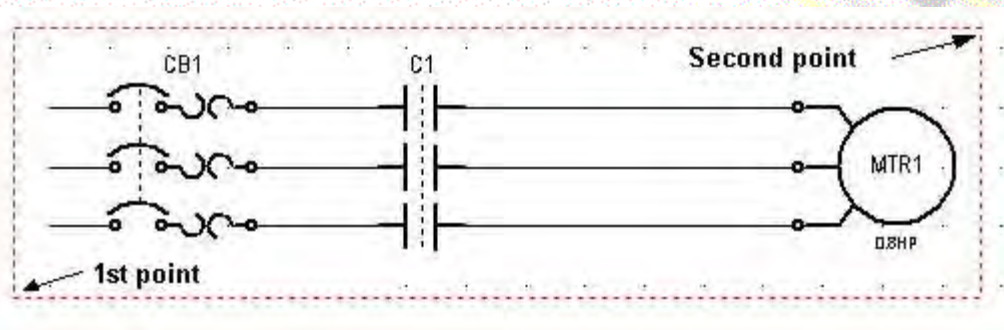
Insert a contactor (C1) and and circuit breaker (CB1) and a motor(MTR1) on an horizontal 3 phases.

You get :



Click on 

Draw a box (Click and drag) around the motor starter



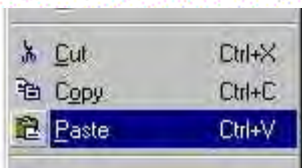
Right click with the mouse on the selected area.

Select **Copy**

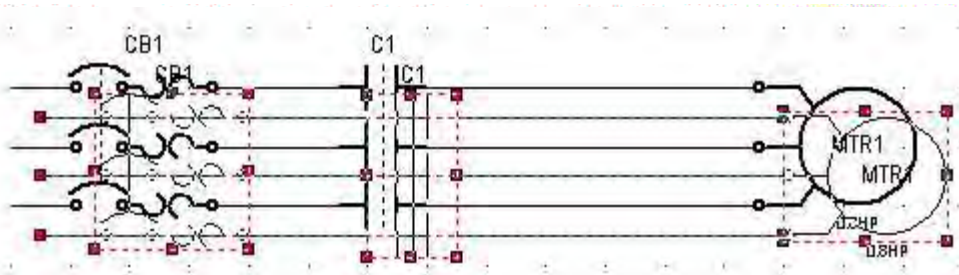


Right click again anywhere on the graphic area .

Select **Paste**

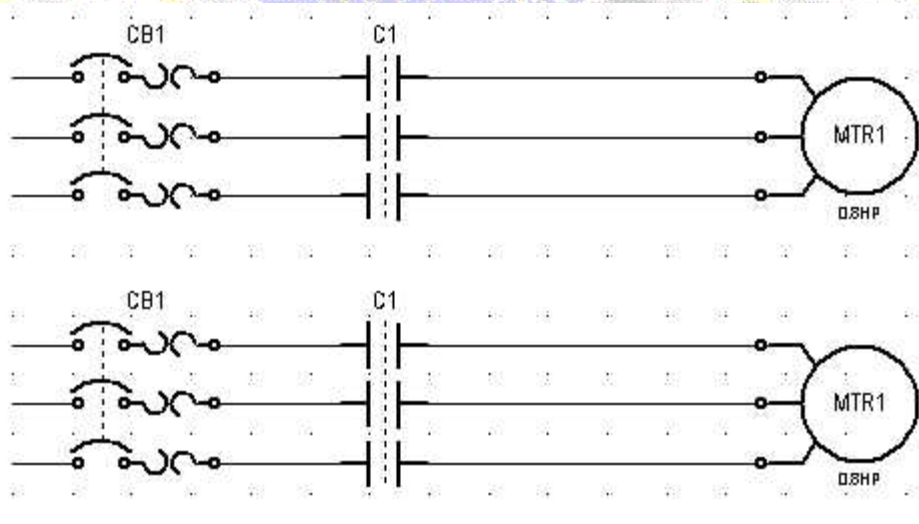


You get :



Click and drag the new motor starter to place in its new position.

You get :



Double click on symbols from the new motor starter to modify the value of there Tag and Information attribute (CB2, C2, MTR2).

Comment

In the Symbol Pallet window, it is possible to create your own families, called *User Families*. This allows you to classify existing symbols from different families into a single one. Therefore, you can group together symbols you are using more often then others, saving you from constantly browsing from one family to the other.

For more information, see the help files:

Menu <?> / **Help – Main Window – Symbol Pallet – User Pallet.**



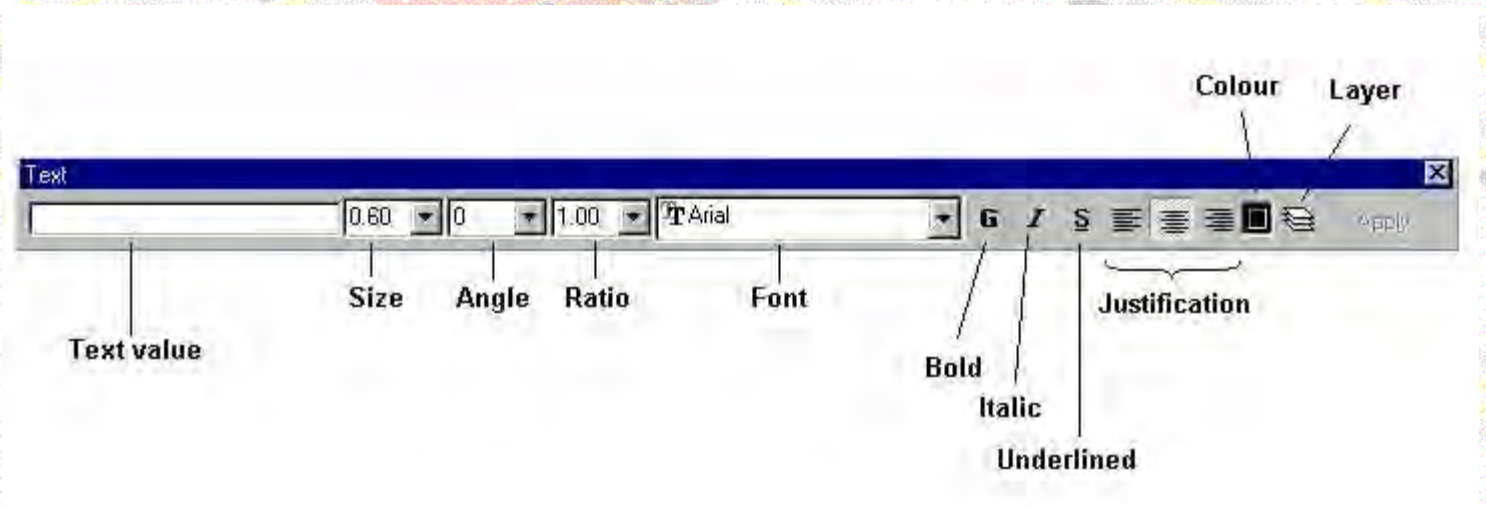


Inserting Text



Click on Insert / Text or the button 

The following tool bar is displayed :



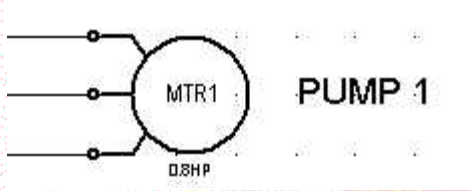
The ratio represents the compression factor (width) of text.

Select the different settings

Click on the graphic area where you wish to insert a text

Enter a text value (Example : Pump 1)

You get :



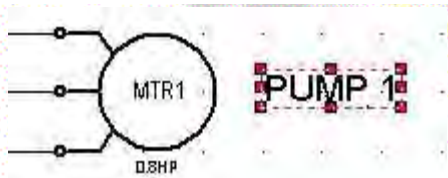
Do the same operation for all texts.

Comment

To modify the value of an existing text, follow the procedure below

Click on 

Double-click on the text to modify



-Enter the new text value in the Text value field of the "Insert / Text" tool bar.

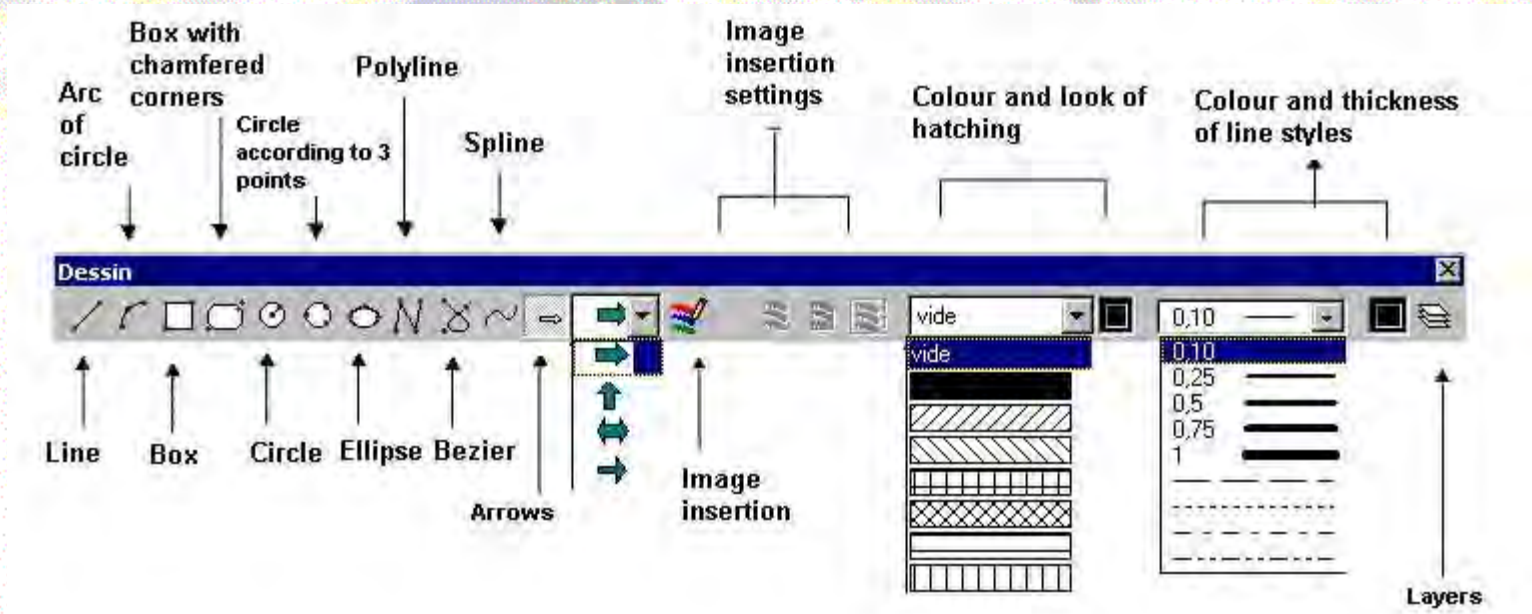
The screenshot shows the 'Text' tool bar. It has a blue header with the word 'Text'. Below the header is a text input field containing 'MOTOR PUMP 1'. To the right of the text field are three dropdown menus with values '1.00', '0', and '1.00'. To the right of these is a font selection dropdown menu showing 'Arial'.



This function allows you to insert standard drawings (lines, circles, boxes, etc..).

Click "Insert / Drawing » or the button

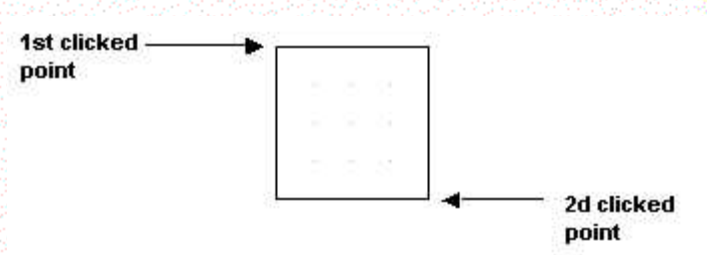
The following tool bar is displayed :



Select the style, thickness and colour of your line

Select the type of drawing you wish to insert (Ex: Box)

Click a 1st and 2d point to insert your drawing .

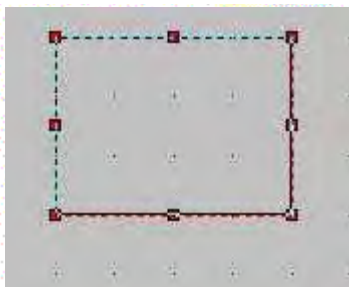


Comment

To modify the drawing follow the procedure below :

Click

Click the drawing to modify



-Select a new setting in the "Insert / Drawing" Tool bar
(Modify hatching, line thickness and line style)



Note

To insert a perfect square, click on the Box drawing insertion and draw your box while pressing the SHIFT key on the keyboard .

It is possible to insert a BMP or WMF image on your Sheet

Click on  to insert the image

Select one of the three settings



Click one point if you selected « Real size » or otherwise draw a box by defining two points.

Select the image file from the following window:



Click  to insert your image.





Inserting A Connection Text



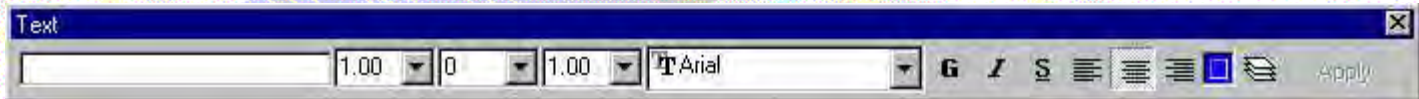
This function allows you to associate a text to a connection.

(Example: a wire colour, a wire number...)

Click «Insert / Connection text » or the button



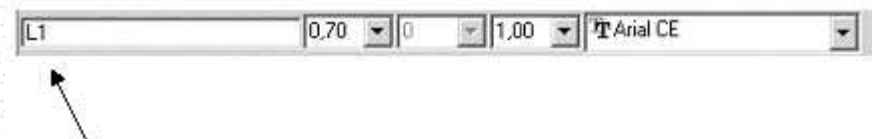
The following tool bar is displayed :



For a standard text, select the size, ratio, font, ...

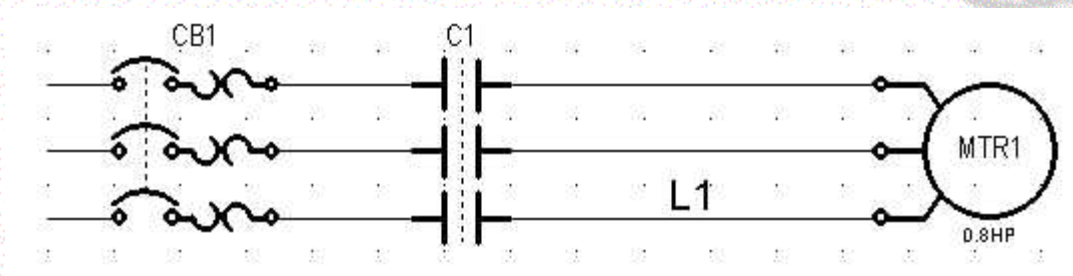
Click on the connection you wish to associate a text

Enter the value.



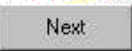
The text is automatically placed in line with the middle of the connection length.

You get:

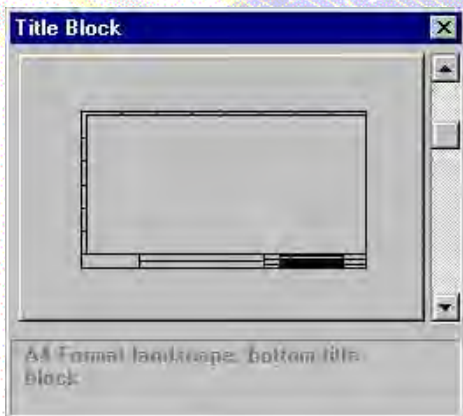


To create a new sheet:

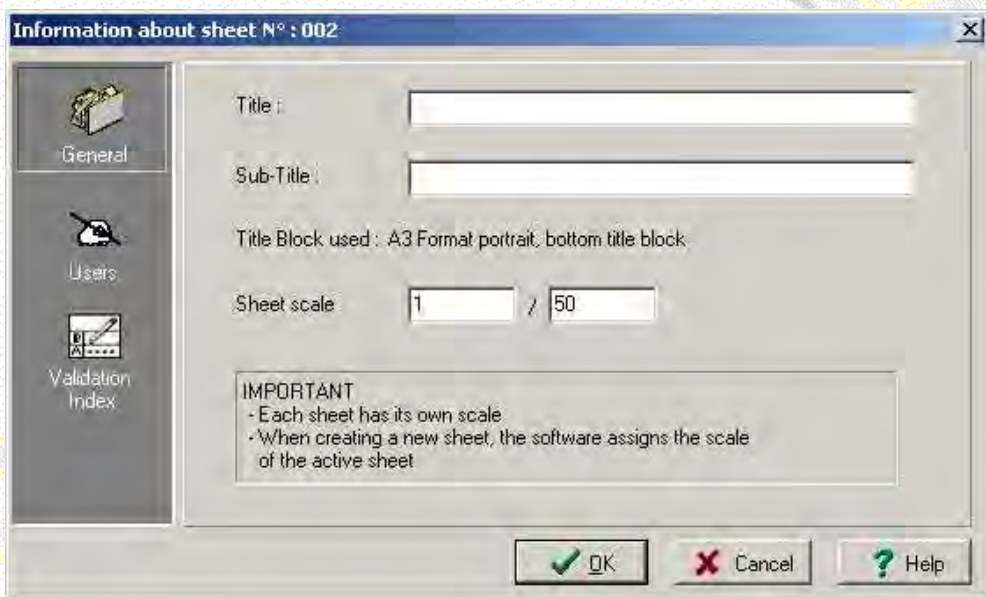
Click "File / New Sheet"

Click  or type in a number

Select a title block .



Enter information for the second sheet (Title, Sub-Title).
 (Example : Title = HOUSE, Sub-Title= BASEMENT)



You can assign users names and revision index.

You get:

SEE Technical [Evaluation version] [D:\PRODUIT\See Technical\Version\Francais\See_Tech_3_Fr\Dossiers\TEST] - [2 : (No Title)]

File Edit View Insert Change Action Symbol Tools Window ?

63.51

1.00 0 1.00 Arial G I S

Puissance 3P

Contac
puissar

Disjonct
magnéti

Disconé
3 pole

Disconé
3 pole

Fusibl
puissar

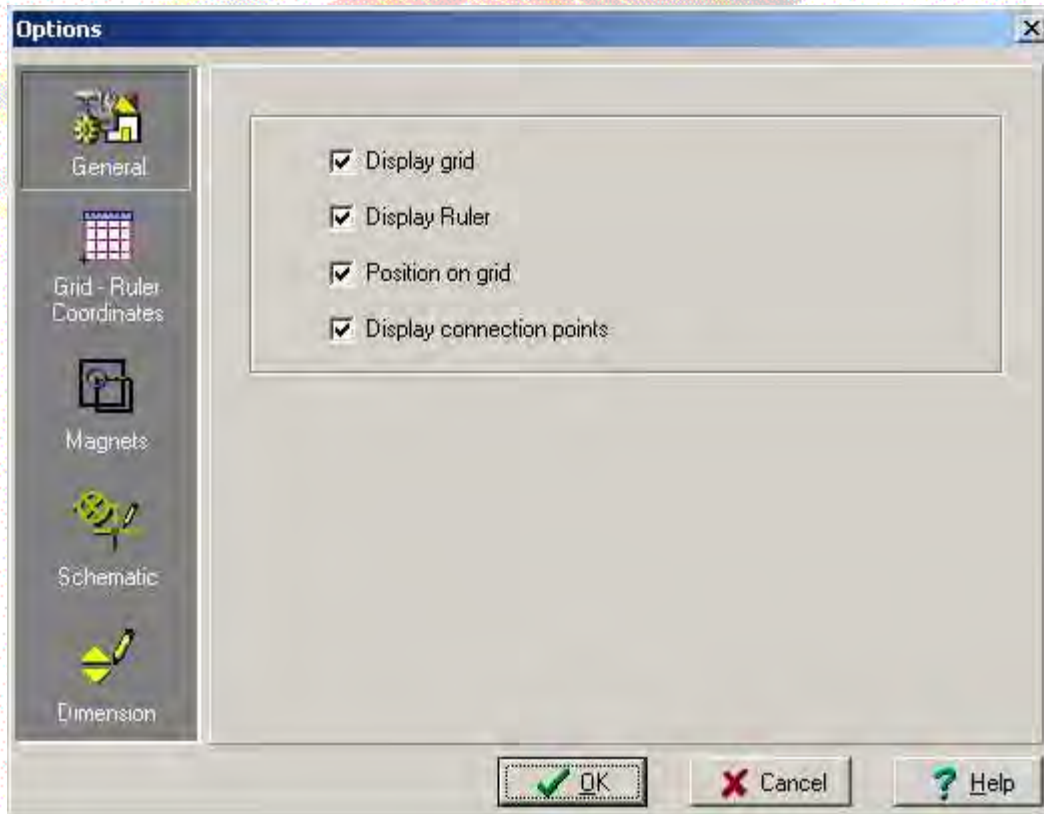
| Exemple: | Ente | Modèles: | Ente modé |
|----------|------|----------|-----------|
| | | | J616) |
| | | | J616) |
| | | | 2 / 0 |

Click for an element, drag to select and area or move selected elements. 402.41mm 272.96mm Layer 3 Selection



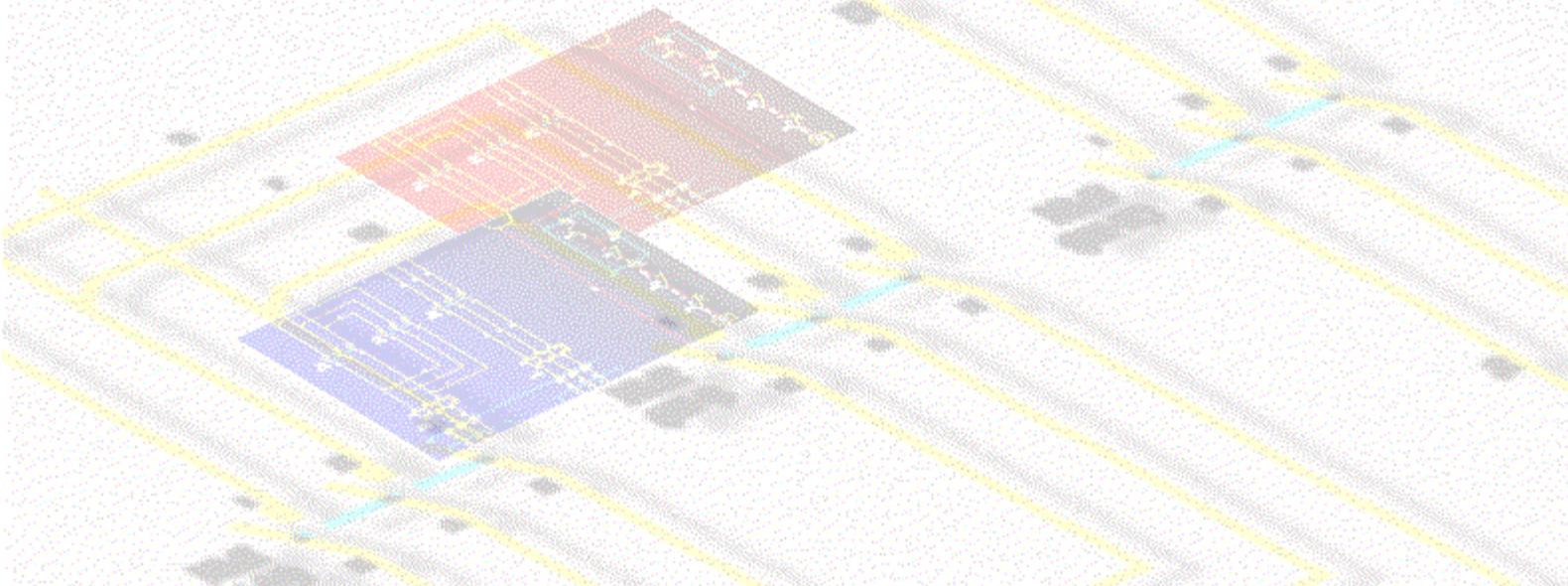
Click "Tools / Options"

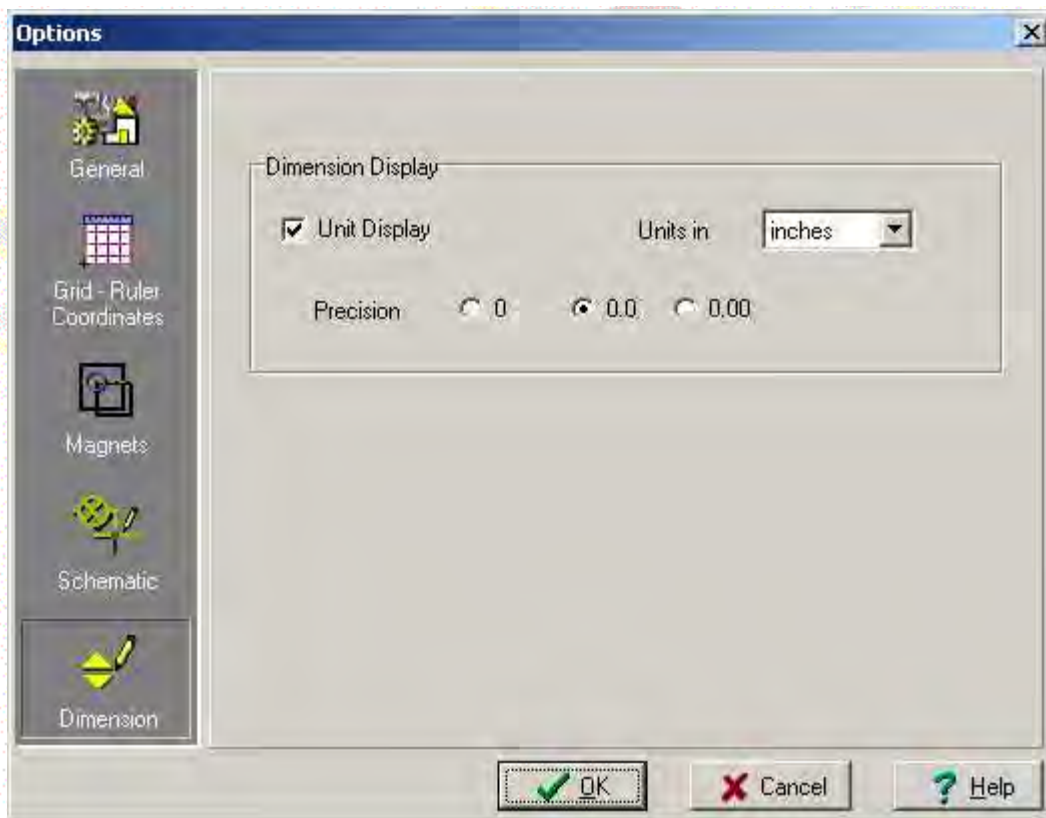
The following window is displayed:



Click on the Dimension tab

You get:





Enter the working scale (Example: 1/50).



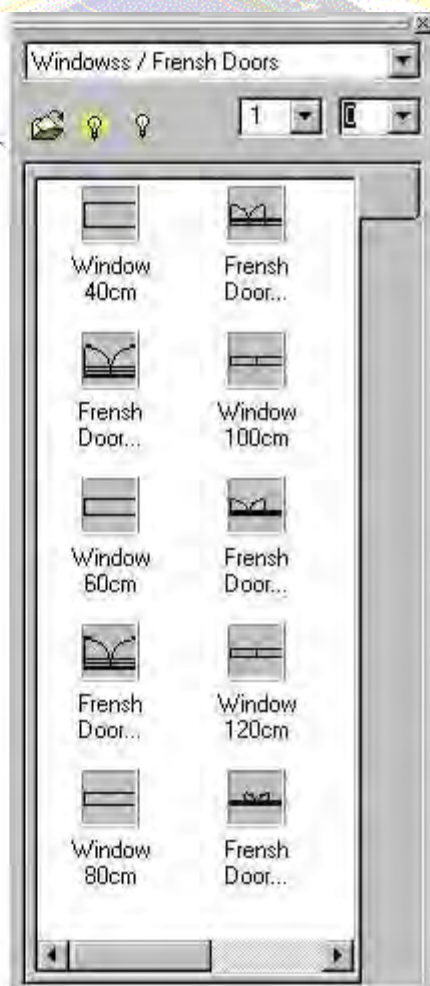
A wall is a symbol.

Click "Insert / Symbol" or the button



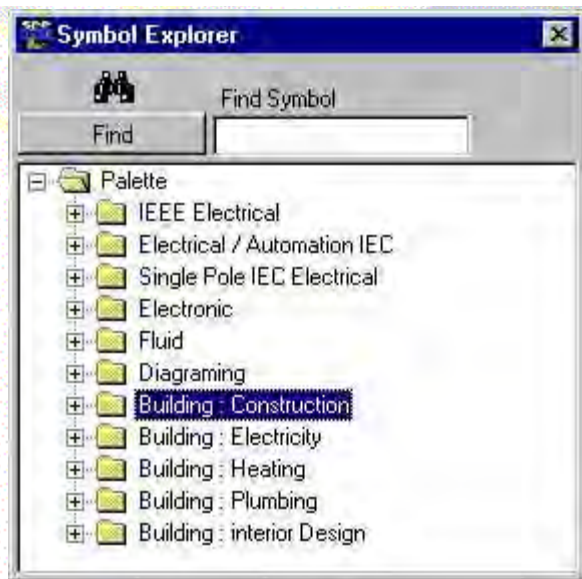
If it is not already displayed, the Pallet explorer appears :

List of libraries



Click on the icon  to change symbol library.

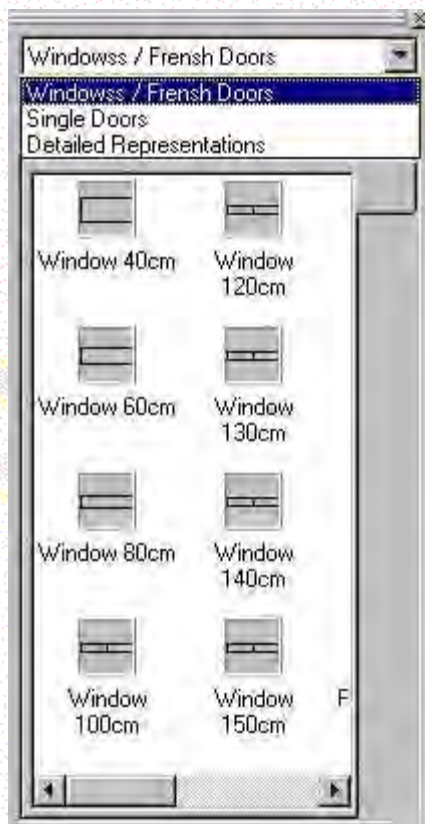
The following window is displayed:



• Double-click on Building: Construction

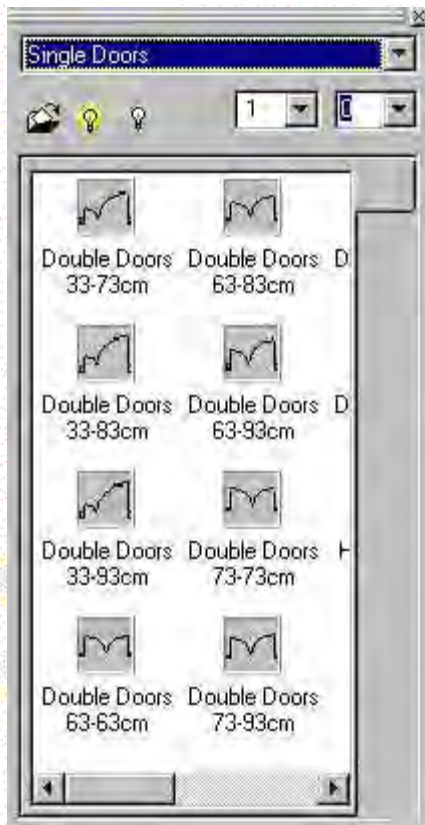
• Close the window

• You get:



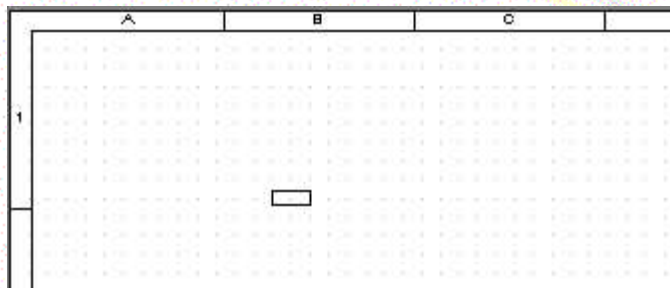
• Select the "Single doors" family

• You get:



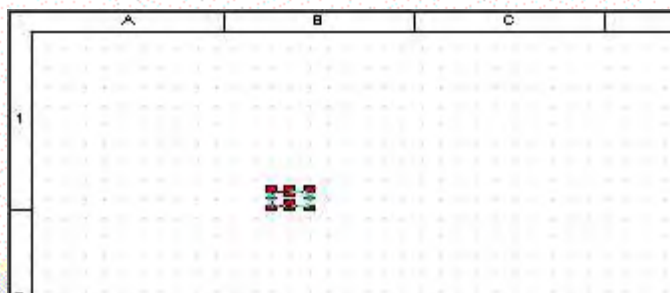
• Select the "Frontage" symbol.

• Insert it as an horizontal wall.



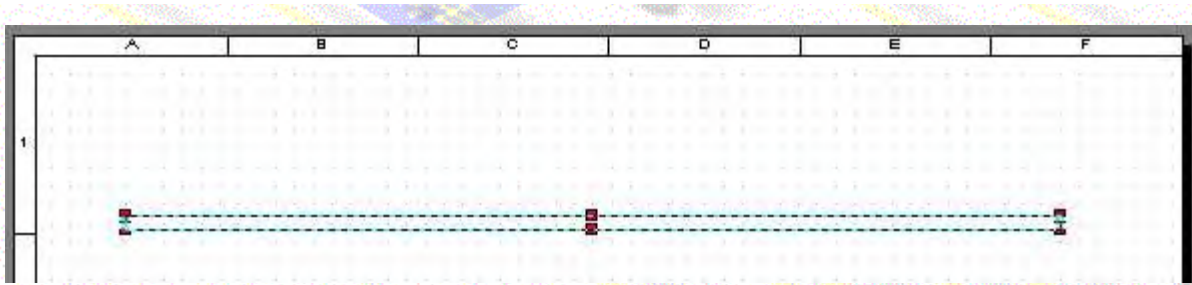
• Click 

• Select your wall



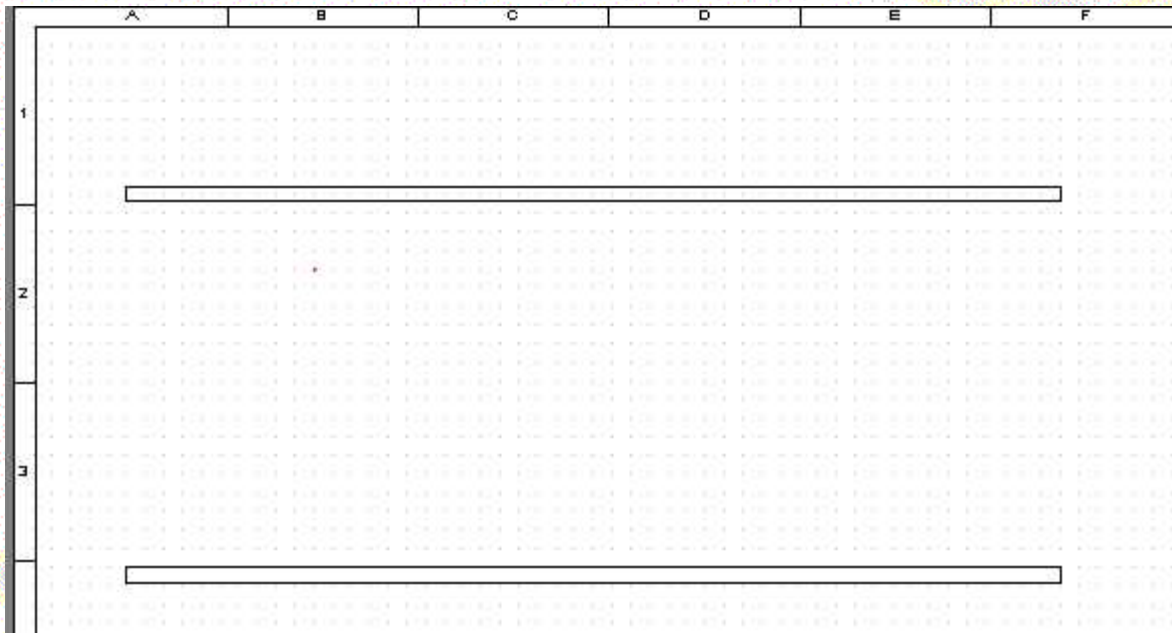
• Place your cursor on the right extremity of the symbol

• Click and drag to stretch it.



Insert a second horizontal wall

You get:



Select a 90° angle



Insert a vertical wall



Press the SHIFT+CTRL keys to define a magnet on one of your wall extremities or in the middle.

Zoom on your Wall.

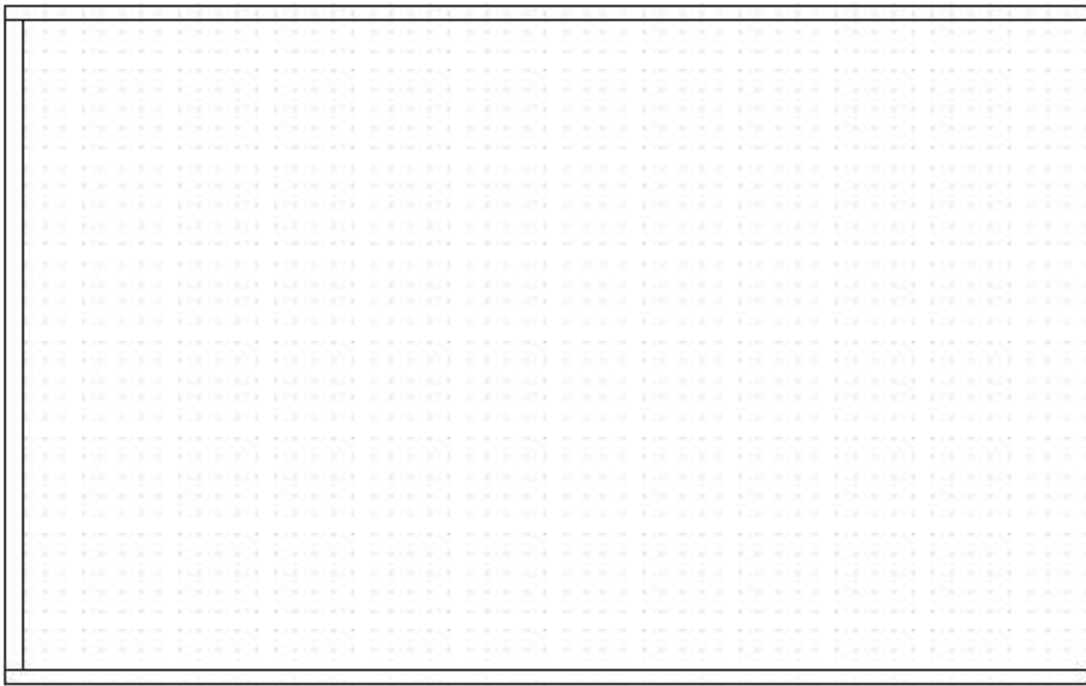


Select your wall

Place the cursor on the extremity of the wall

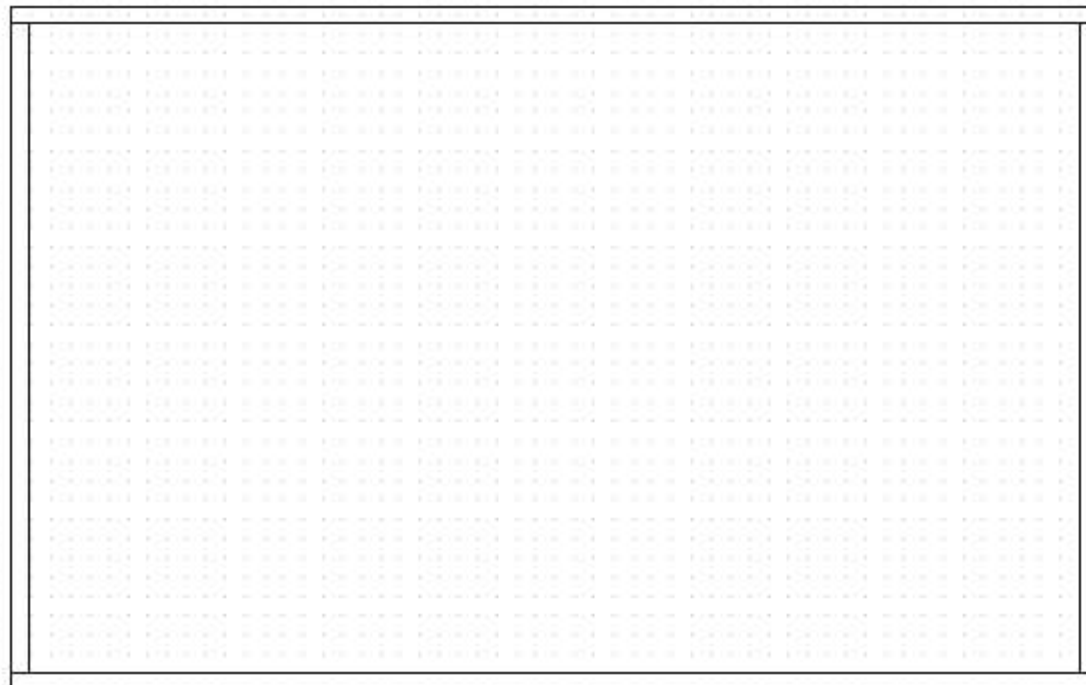
Click and drag to stretch it.

You get



Insert a second vertical wall

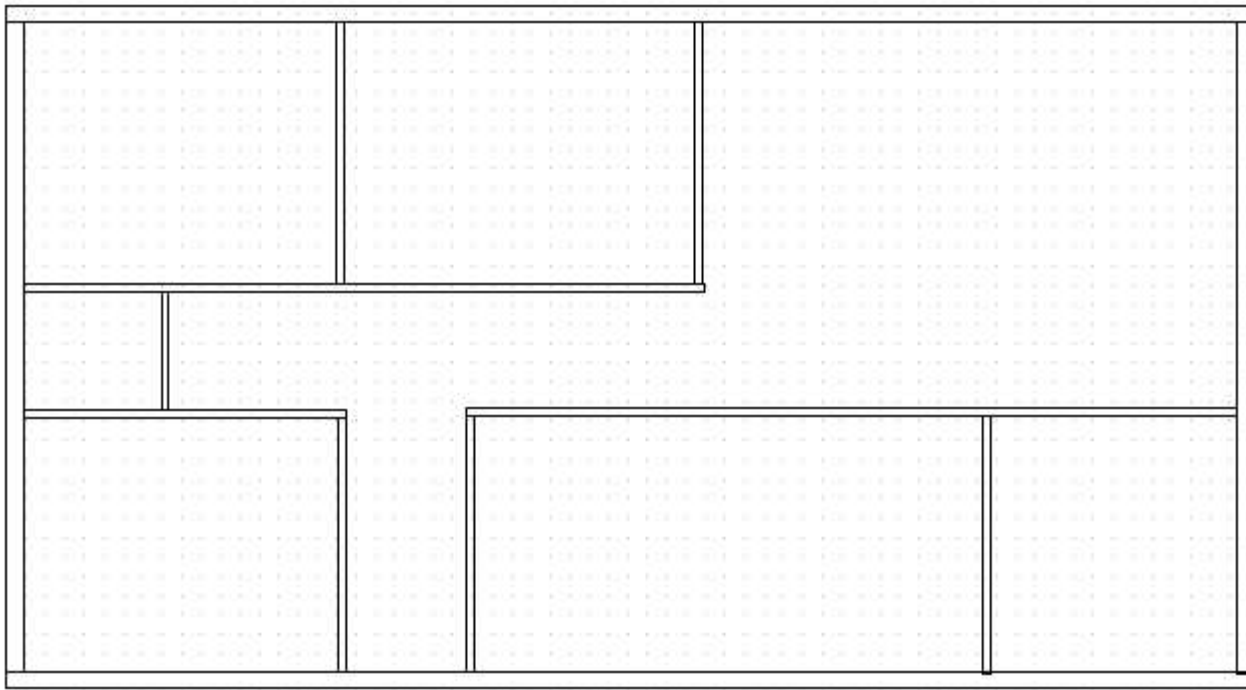
You get:



Select the "Partition" symbol

Insert, with the same method, interior walls.

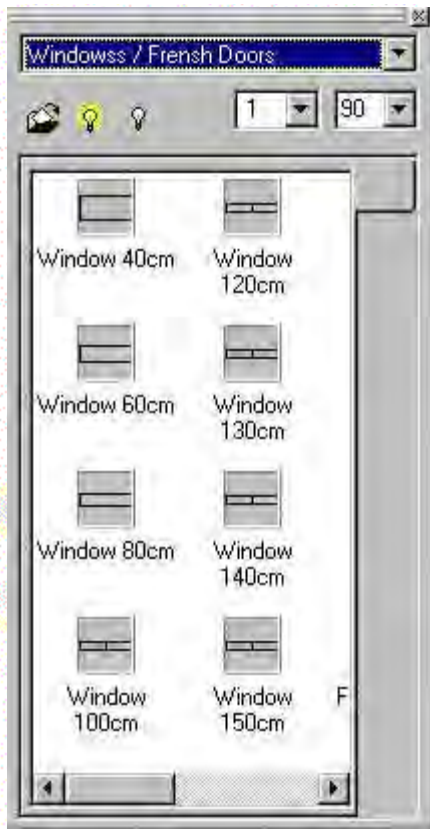
You get:



Select the "Windows / French doors" family.




Symbols from this family are displayed



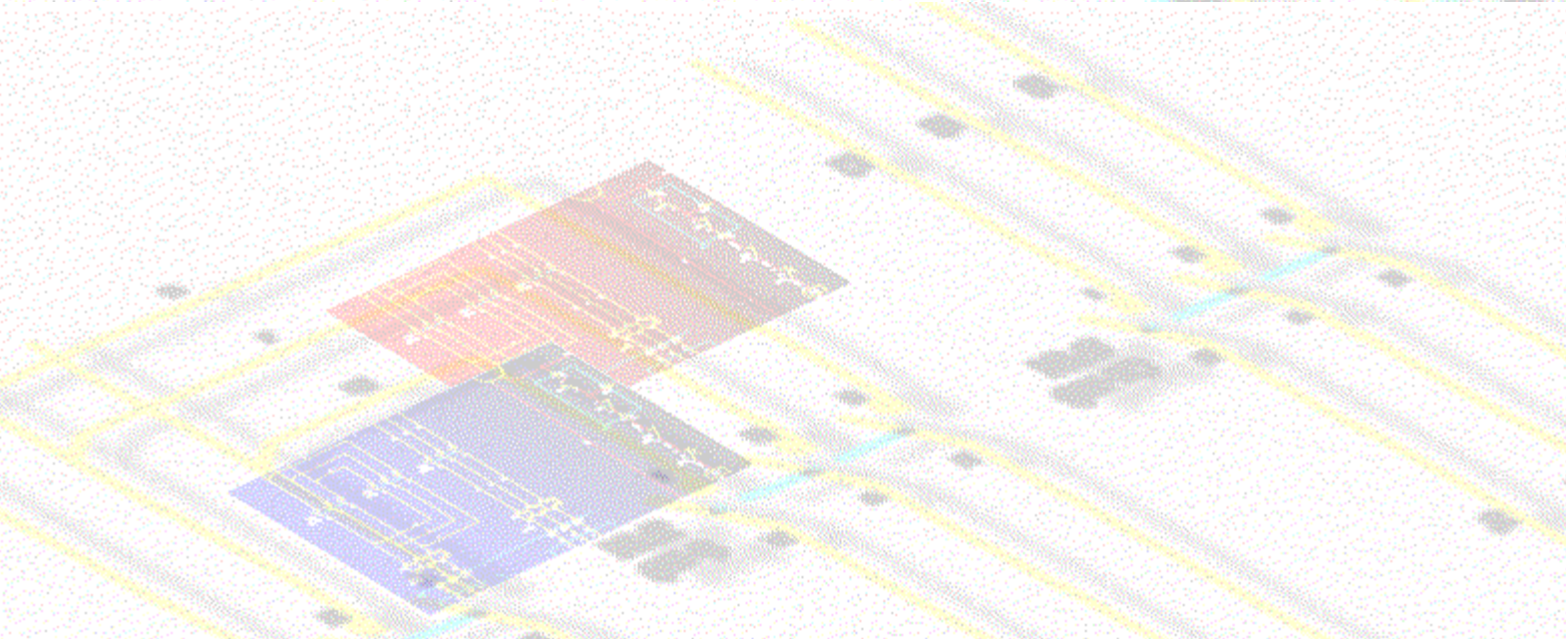
“Select the "window 120cm" symbol.

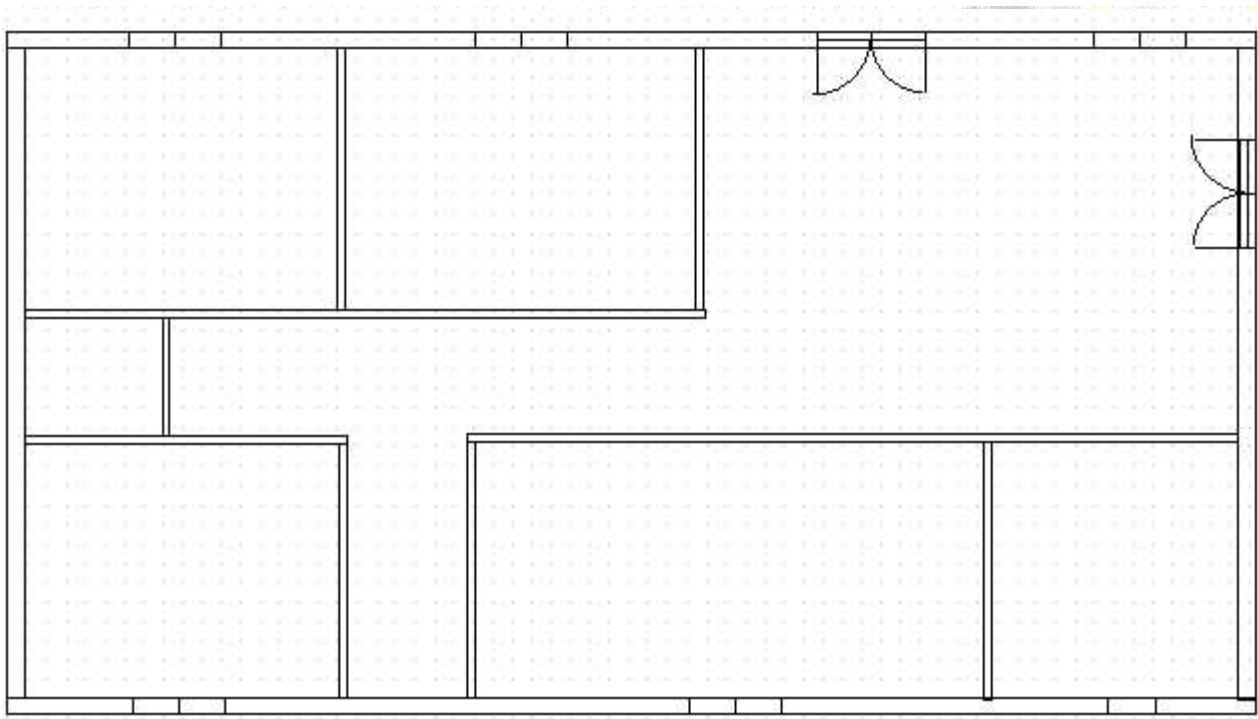
“Insert your windows°

“You can un-snap from the grid by clicking 

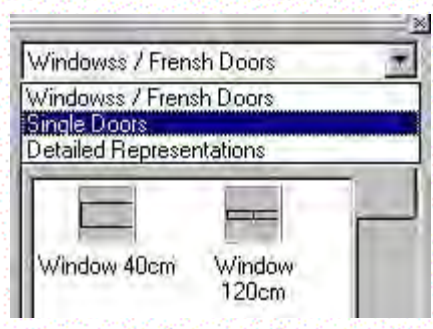
“Insert windows using the same method than for walls.

“You get:



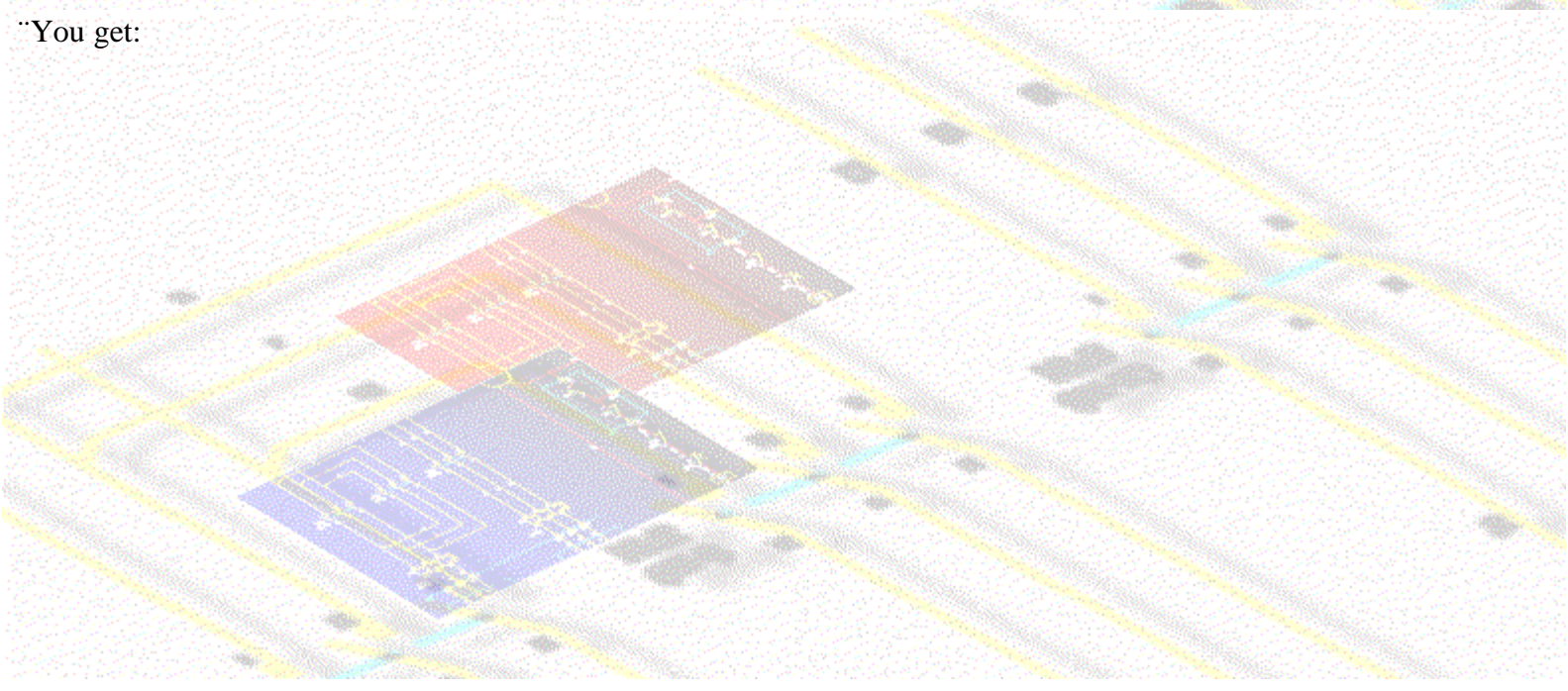


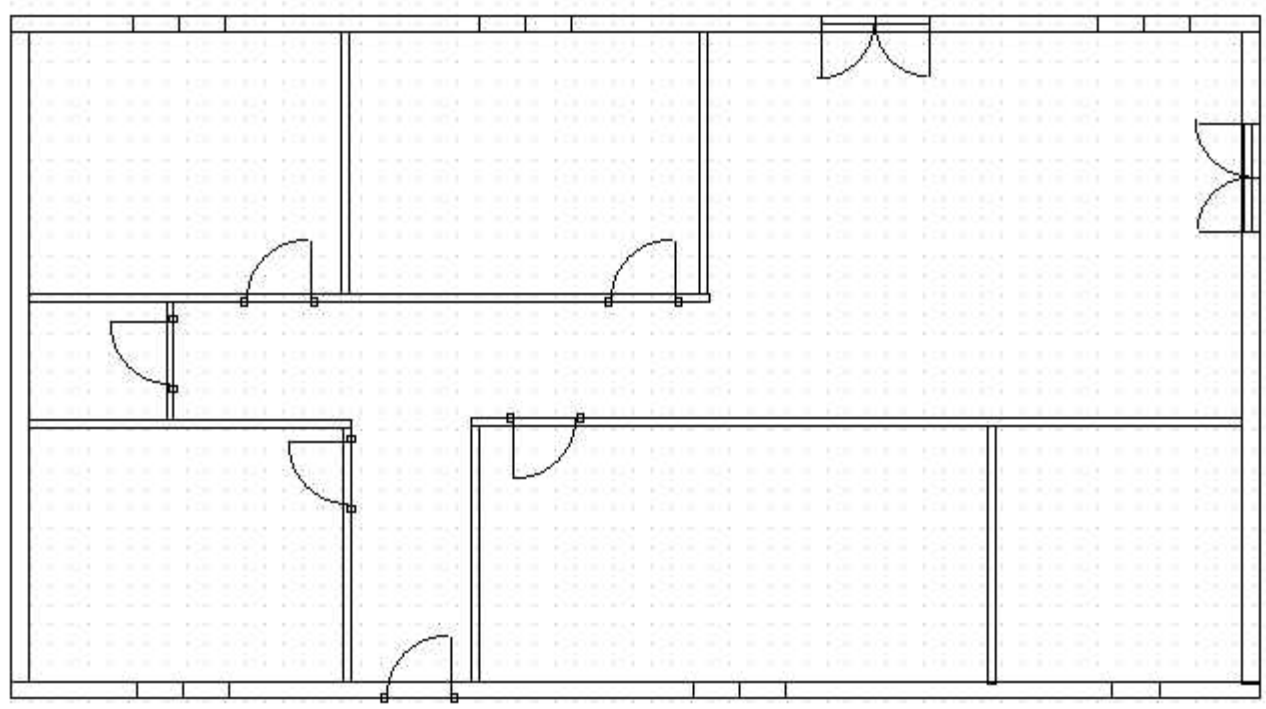
Select the "Single Doors"



Insert your doors using the same method.

You get:





This function allows you to place dimension lines on your diagram.

Click "Insert / Dimension" or the button 

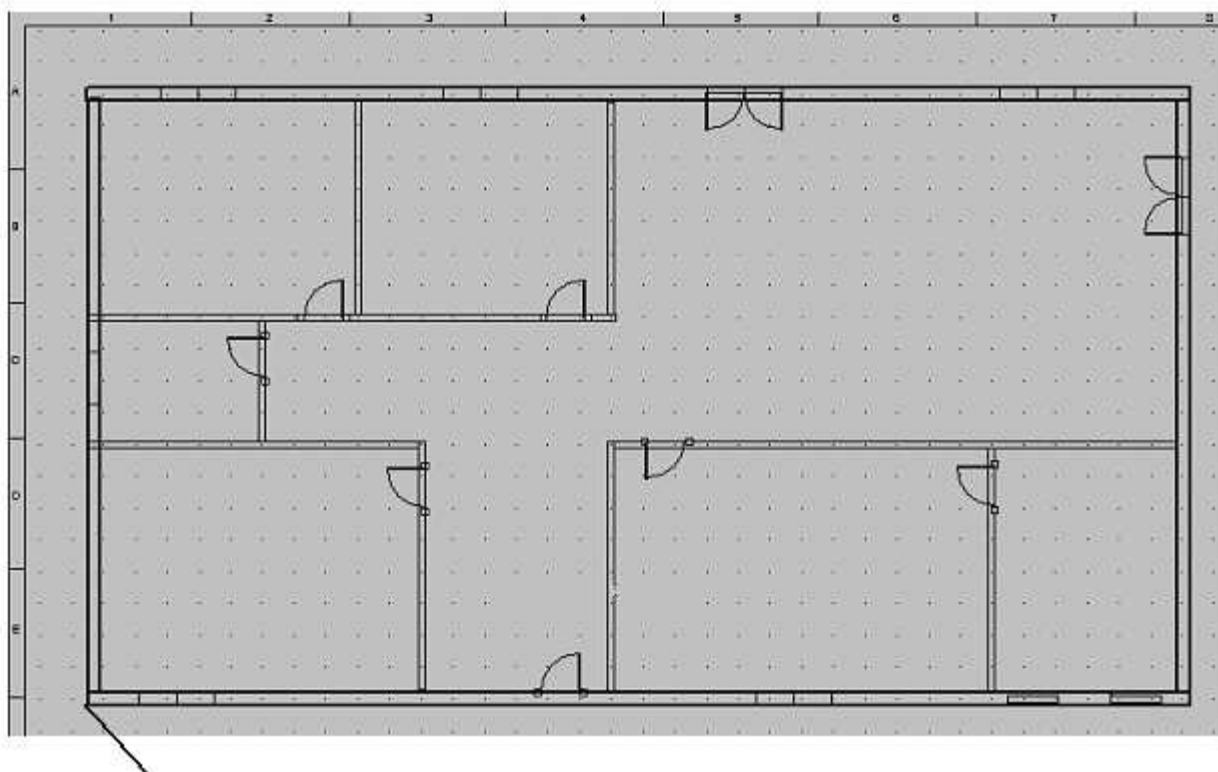
The following tool bars are displayed :



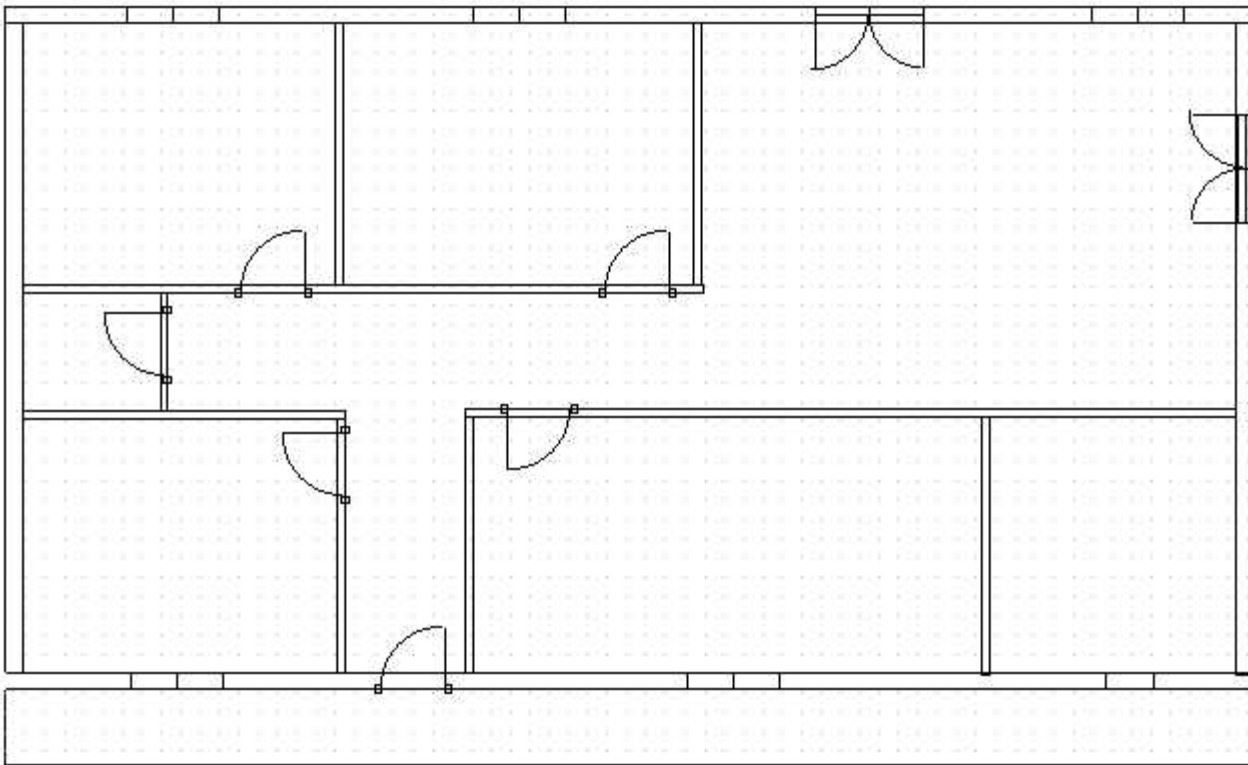
Select the font and dimension size

Select the graphic appearance, the thickness and colour of your dimension.

Press the SHIFT+CTRL keys and click your first point.

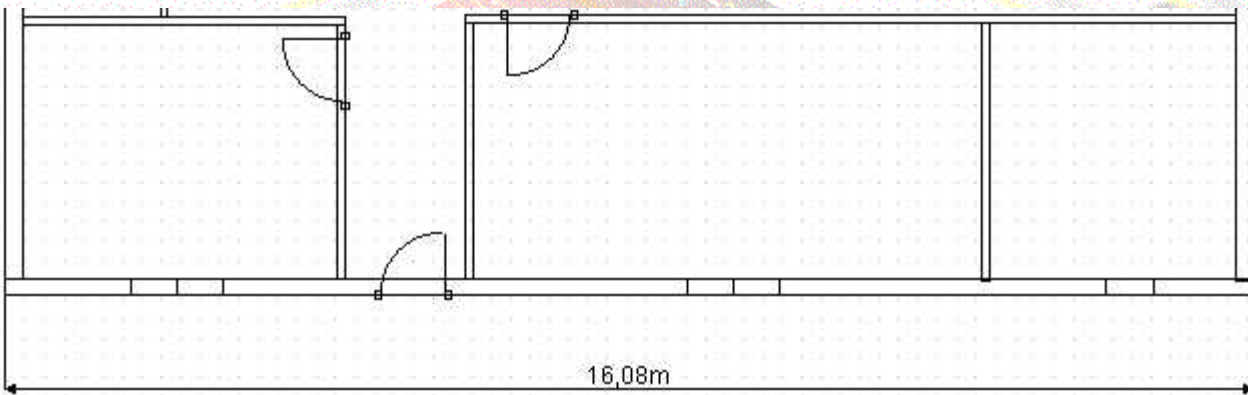


Press the SHIFT+CTRL keys and click your second point.



Click where you wish the dimension value to be displayed.

You get:



Note

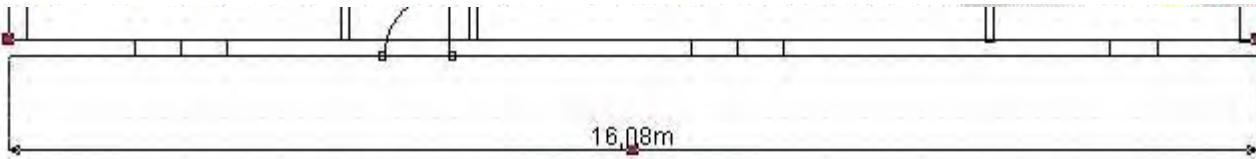
The dimension value will be recalculated every time you move or modify the dimension.

Comment

1- Modifying an inserted dimension

Click 

Click the dimension to modify



-Enter new settings

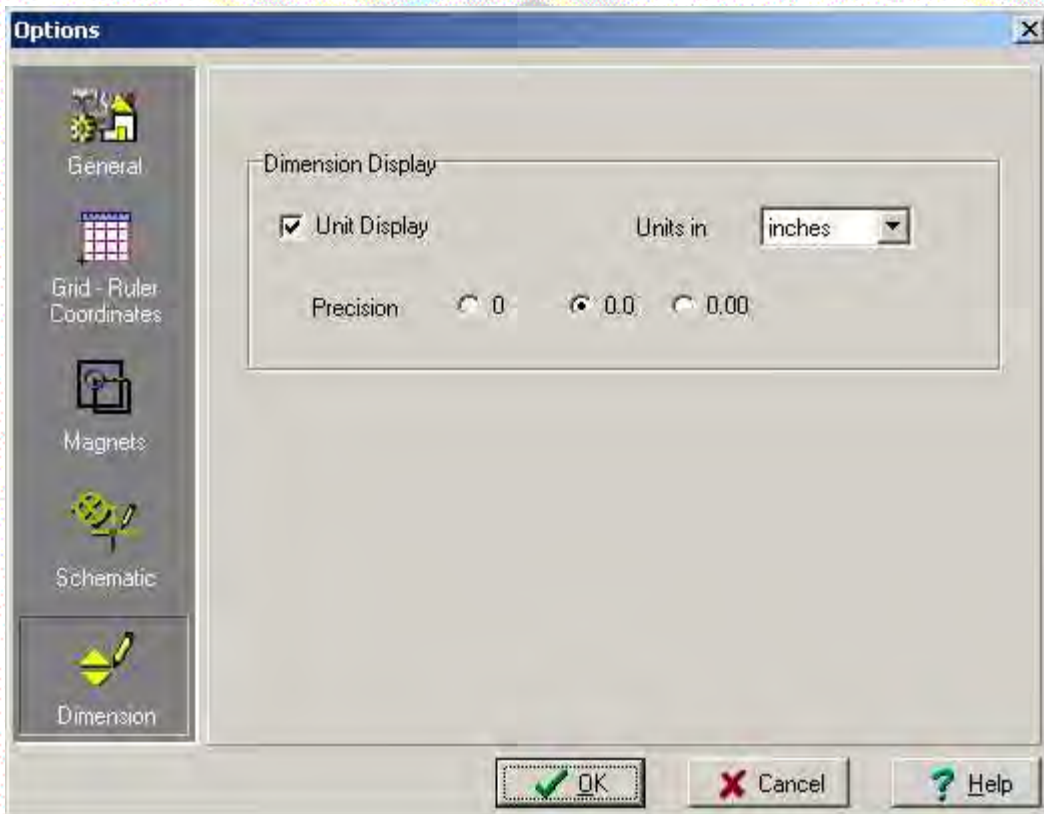


2- Settings

"You can modify default settings :

-Click "Tools / Options"

-Click the "Dimension" icon



"Insert texts on your drawing.

"You get:

